



E.ON Energy Research Center



FCN | Institute for Future Energy Consumer Needs and Behavior
Chair of Energy Economics and Management | Prof. Dr. Reinhard Madlener

FCN Working Paper No. 7/2016

Economic Viability of Second-Life Electric Vehicle Batteries for Energy Storage in Private Households

Alexander Kirmas and Reinhard Madlener

July 2016
Revised April 2017

**Institute for Future Energy Consumer
Needs and Behavior (FCN)**

School of Business and Economics / E.ON ERC

FCN Working Paper No. 7/2016

Economic Viability of Second-Life Electric Vehicle Batteries for Energy Storage in Private Households

July 2016

Revised April 2017

Authors' addresses:

Alexander Kirmas
RWTH Aachen University
Templergraben 55
52056 Aachen, Germany
E-Mail: alexander.kirmas@rwth-aachen.de

Reinhard Madlener
Institute for Future Energy Consumer Needs and Behavior (FCN)
School of Business and Economics / E.ON Energy Research Center
RWTH Aachen University
Mathieustrasse 10
52074 Aachen, Germany
E-Mail: RMadlener@eonerc.rwth-aachen.de

Publisher: Prof. Dr. Reinhard Madlener
Chair of Energy Economics and Management
Director, Institute for Future Energy Consumer Needs and Behavior (FCN)
E.ON Energy Research Center (E.ON ERC)
RWTH Aachen University
Mathieustrasse 10, 52074 Aachen, Germany
Phone: +49 (0) 241-80 49820
Fax: +49 (0) 241-80 49829
Web: www.eonerc.rwth-aachen.de/fcn
E-mail: post_fcn@eonerc.rwth-aachen.de

Economic viability of second-life electric vehicle batteries for energy storage in private households

Alexander Kirmas^a and Reinhard Madlener^{b,*}

^a RWTH Aachen University, Templergraben 55, 52056 Aachen, Germany

^b Institute for Future Energy Consumer Needs and Behavior (FCN), School of Business and Economics / E.ON Energy Research Center, RWTH Aachen University, Mathieustrasse 10, 52074 Aachen, Germany

July 2016, revised April 2017

Abstract

We examine the economic viability of second-life batteries from electric vehicles for load shifting and peak shaving in residential applications. We further investigate the expected impact of a growing number of residential storage systems on the electricity market. For the analysis a simulation model of a private household with integrated PV-storage system is used that is parametrized for an electricity demand of three people and a location in southern Germany. The conditions for which investments in second use batteries are profitable are examined for three scenarios. The central scenario S2 tackles an expected net increase in the electricity price by 4% per year. Upward and downward deviations from this price trajectory are covered by scenarios S1 and S3. For scenario S1, we find that investments in storage systems are profitable for all Li-ion battery costs assumed. In scenario S2, the breakeven battery price is found to be 107 €/kWh⁻¹, whereas in scenario S3 with the lowest electricity price growth the battery price has to be equal or lower than 73 €/kWh⁻¹ to maintain economic viability.

Keywords: E-vehicle, Residential electricity, Battery storage, Load shifting, Peak shaving

1. Introduction

Renewable energy technologies are a promising way to mitigate the consequences of climate change and the finiteness of fossil fuels. However, the intermittent electricity output from technologies like solar photovoltaic systems is volatile and depends on daytimes or local weather conditions. Energy storage technologies can help to match supply and demand. Reused batteries from (hybrid) electric vehicles may provide a storage technology with environmental

* Corresponding author. Tel.: +49-241-80-49-820; fax: +49-241-80-49-829; E-mail address: RMadlener@eonerc.rwth-aachen.de (R. Madlener)

and economic benefits to utilities, companies and homeowners. In the upcoming years the global society is confronted with a variety of challenges. Climate change and fossil fuel resource depletion are some challenges the energy economy has to find solutions for. Renewable energy technologies will play a significant role in mitigating the consequences of these challenges [1]. Governments of many countries have passed laws to support the transition to sustainable energy generation. In Germany policy makers decided to foster the development of renewable energy technologies through the provision of guaranteed feed-in tariffs. This funding made rooftop photovoltaic (PV) systems attractive to private homeowners. However, the energy generation from PV systems strongly depends on time of day and local weather conditions and brings an element of uncertainty to the power grid [2]. Furthermore, the peak in energy generation around noon produces a mismatch in demand and supply and is a threat to the stability of the electricity system [3].

A feasible way to compensate for this mismatch is to adjust the energy supply by using conventional power plants (like modern gas-fired power plants) which can be modulated relatively quickly. But with limited capacities and an increasing amount of energy fed in by renewables, other options have to be considered. The mismatch exists because the power supply generated by PV systems is highest during the day with a peak around noon, whereas power demand is low during the day and increases in the evening hours. The use of storage technologies and smart grid technologies represents a promising way to shift energy demand from the evening hours to the hours with a surplus of renewable energy generation.

In battery storage systems the electricity is stored through an electro-chemical process. Due to decreasing battery costs they have become a potentially important alternative to other storage technologies and several pilot projects have been started in recent years. Although battery costs have declined, [4]-[6] could not find evidence that investments in battery storage were profitable under present conditions. The costs per kWh decrease further if used battery storage units are taken into consideration. In this case, the benefits from lower costs have to be balanced with the downsides (e.g., lower capacity and efficiency, earlier replacement need of used battery systems).

In the automotive industry the “second life” of retired batteries from electric vehicles is a much debated issue, and nearly all of the major car manufacturers are currently determining possible applications for their batteries after they have reached a capacity between 70-80% through aging during their “first life” in the vehicle. Most industry experts expect them to be used as stationary storage for renewable energy production, since they still retain significant capacity. In recent years, several projects were implemented in order to gather knowledge about

the feasibility and the capabilities of the second life usage. For instance, Nissan and Green Charge Networks, a large provider of commercial energy storage, have embarked on a partnership for the commercial use of the retired batteries from the Nissan Leaf, which is one of the world's top-selling electric vehicle [7]. Toyota started a partnership with the Yellowstone National Park and provides a ranger station and education center with power from a hybrid PV-battery system [8]. General Motors has tested their batteries from the Chevrolet Volt to provide solar and wind power to their new IT center in Milford, Michigan. However, the projects of Toyota and General Motors are mostly isolated applications, whereas in Germany grid-connected solutions by Daimler and BMW are explored. A cooperation between Daimler, The Mobility House, GETEC and REMONDIS provides a 13 MWh energy storage unit to balance the energy in the electricity grid [9] and BMW, Bosch and Vattenfall operate a battery pack as part of a virtual power plant in Hamburg [10]. The discussion shows the relevance of using batteries as energy storage systems, and the importance of taking a closer look at the requirements for a successful implementation, the consequences, and the resulting implications.

The question arises concerning the conditions under which the economic viability of the residential PV-storage system is given. The purchase and maintenance not only of the battery but of the other system components, like the inverter, has to provide a benefit to the decision maker, in this case the homeowner. Possible benefits for other involved parties, like the grid operators, may be shared with the decision maker in order to positively influence economic viability. In addition to that, policy makers may foster the spread of the storage technology through various incentives like credits at reduced interest rates. Further, it is important to estimate what impact a growing number of residential battery storage systems has on the market, the electricity sector, and policy-making. Finally, there is the question concerning which implications and guidance can be derived from the results for energy companies, grid operators, car manufactures, and policy makers.

The research objective is to determine the economic viability of the implementation of a used battery from an electric (EV) or hybrid electric vehicle (HEV) in a residential application for load-shifting and peak-shaving. Precisely, a household with a PV generation system is considered and the benefit of combining it with a battery storage system is examined. The battery technology is limited to lithium-ion as it is the dominant technology for EVs and HEVs today.

The economic viability is evaluated based on literature research and a precise and time-dependent calculation of the cash flows and the resulting net present value. The research issues described can be examined using different approaches. Battke et al. [11] examined lifecycle

costs using Monte Carlo simulations and also conducted some expert interviews. Pawel [12] showed how to calculate the levelized cost of energy (LCoE) for battery storage combined with PV systems. They revealed the dependency of LCoE for storage due to a variation of the economic parameters. In this paper, a techno-economic simulation model is used to examine the economic value of integrating a second-use storage to a residential PV system and to show the dependency from economic as well as from technological parameters. Similar approaches are used in [1] and [13] for new battery packs. To examine the economic viability of a second-use battery, the technical aspects are as important as the economic ones. The degradation of the state of health is crucial to the economic value, especially for a used battery, and has to be considered. In our study, a simulation tool has been developed that includes a detailed degradation calculation through a decrease of capacity and an increase of the inner resistance. It reflects the state of charge as well as the power generation over time and can be used for revenue calculation in various scenarios.

2. Modeling approach and data

2.1 Introduction

In order to investigate the economic viability of an integrated PV-storage system using a second-life battery a simulation model for a private household is developed. Figure 1 depicts the general system layout adopted for the analysis. The model uses technological and economic parameters as an input for the calculation model, programmed in the simulation environment MATLAB/Simulink. The simulation model calculates the time-dependent PV power generation, battery state, load profile, and resulting cash flows. The model output enables to make a statement regarding the viability of the battery integration, the optimal storage size and some of the resulting implications for the parties involved.

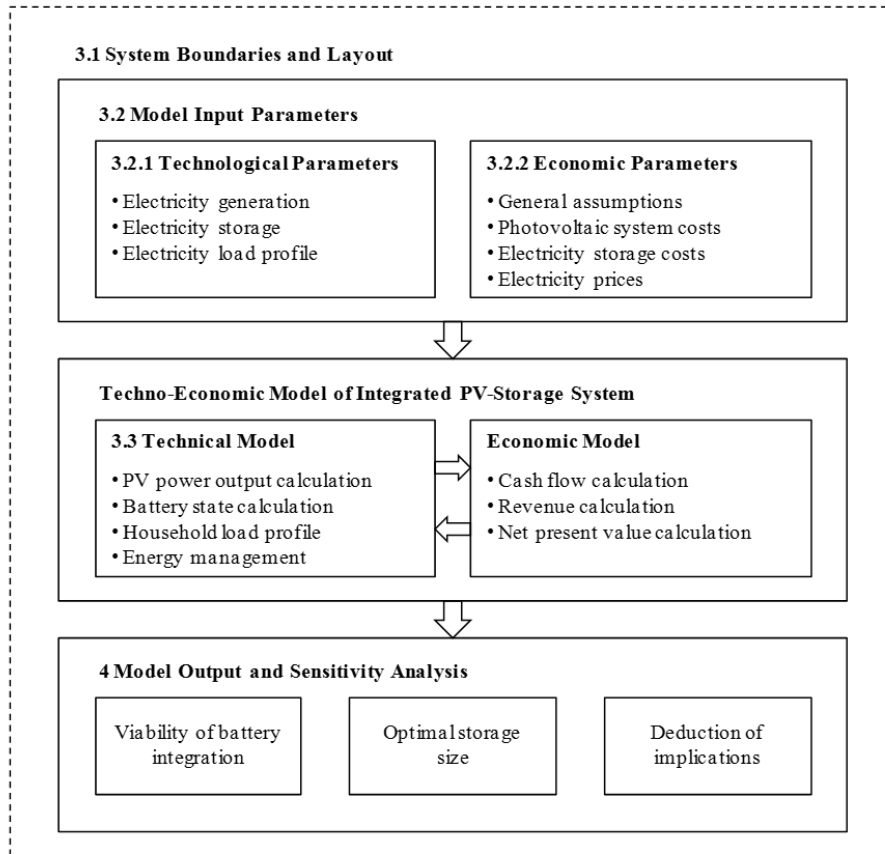


Fig. 1. System architecture. *Source:* adopted from [1], p.7.

2.2 Model input parameters

The developed simulation model is independent of prescribed scenarios and can be used to examine a variety of different cases by parameterization. In this case the parameters are defined for a three-person household in the area of Stuttgart, Germany, in order to make it comparable to similar studies by Bost et al. [4] or Braun et al. [5]. Also the German electricity market has a large share of PV generation and the resulting intermittency may make Germany an important lead market for second-use battery storage systems. Furthermore, a large share of the German PV market consists of residential small-scale systems which could profit from a storage system [15].

2.2.1 Technological parameters

The technological input parameters can be grouped into the parameters concerning the electricity generation, the electric load and the electricity storage.

Electricity Generation. The electricity generation depends on exogenous data like the available solar irradiation and the air temperature as well as on variable parameters like the amount of installed modules, the mounting or the tilt of the modules. Model inputs are the

irradiation data and the air temperature. This information is taken from a database provided by the DWD (*Deutscher Wetterdienst*) [16] for a measuring station near Stuttgart, Germany. The data consists of the global solar irradiation and the diffuse solar irradiation. For the year 2014 the solar irradiation is presented in Figure 2.

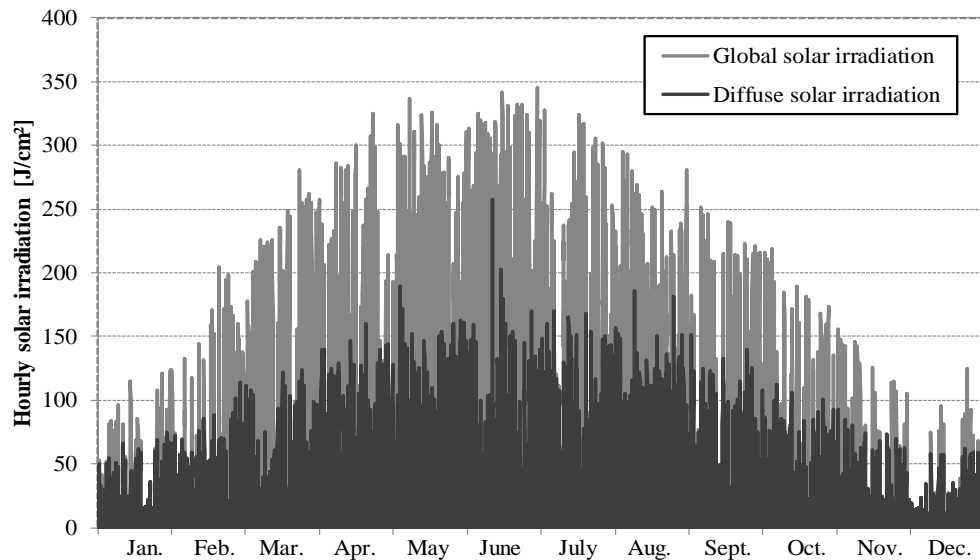


Fig. 2. Solar irradiation data in 2014.

The irradiation data has to be converted in order to calculate the power generation of the PV system. This will be discussed later in subsection 2.3.1. The second input is the air temperature. Because the electricity generation depends on the module temperature the ambient temperature has to be known. The ambient air temperature is shown in Figure 3. Crystalline silicon has been chosen as the PV technology and an installed PV system with a power of 5 kW_p.

Electric Load. The electric load profile is based on the standard load profile from BDEW (*Bundesverband der Energie- und Wasserwirtschaft*) [17]. It is separately defined for weekdays, Saturdays and Sundays as well as for summer, winter and transitional periods. The data is available in 15-minute steps and has to be multiplied with the day-specific dynamic modification factor. Figure 4 shows the electric load profiles for the different days in the transitional period.

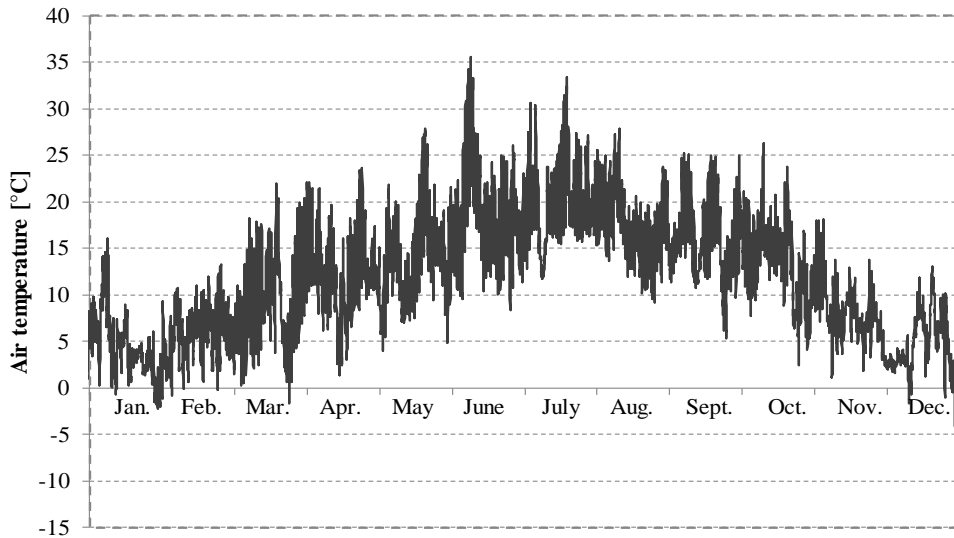


Fig. 3. Ambient air temperature in 2014.

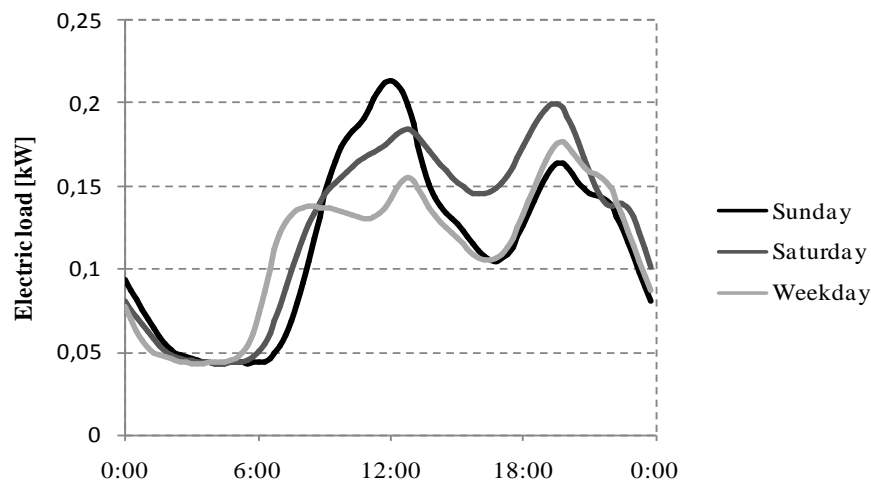


Fig. 4. Electric load profiles for the transitional period.

It is apparent that for weekdays and Saturdays the energy demand in the evening hours is higher than over the rest of the day. Only on Sundays the peak around noon is higher than in the evening. While the peak of the solar irradiation and therefore the PV electricity generation occurs during noon the electricity is needed in the evening hours. This mismatch can be solved with a battery storage. The data is scaled for a 3-person household with an annual electricity consumption of 3892 kWh [4].

Electricity Storage. For the electricity storage a lithium-ion battery is chosen as the technology is dominant in automotive applications as a traction battery for EV and HEV. For

the analysis, the size of the battery storage is varied between 4 kWh and 8 kWh BOL (beginning of life) with a capacity of 80% at the start of the second life [18].

2.2.2 Economic parameters

The economic input parameters can be divided into general assumptions and the parameters concerning the electricity generation, the electricity market and the electricity storage.

General Assumptions. As the model is parameterized for a household in Germany, the currency is Euro and the inflation is set to 1.74% (mean value from 2004 to 2015 for the Euro area [19]). In the past years the inflation has fallen to values around zero. The dependency from the inflation rate will be examined in a sensitivity analysis. For the nominal discount rate a value of 4% chosen in line with previous other studies.

Electricity Generation. In order to estimate the value of adding a battery storage to a PV system, the differential investment between the option to invest in a battery storage or not is examined. The cost of the PV system is not regarded in this case as the net cash flows are the same for both options.

Electricity Market. In order to calculate the electricity costs, scenarios for the future development of the electricity tariffs had to be created. For defining electricity price scenarios the retail price of the period from 2008 to 2015 is regarded. The mean rate of increase in this period is about 4% (including the inflation). It is assumed that the rate of increase in the next ten years is in the corridor of 2 to 6%. This is reflected by the scenarios S1 (low: increase of 2% per year), S2 (medium: increase of 4% per year) and S3 (high: increase of 6% per year). Figure 5 shows the electricity price trajectories and the scenarios investigated.

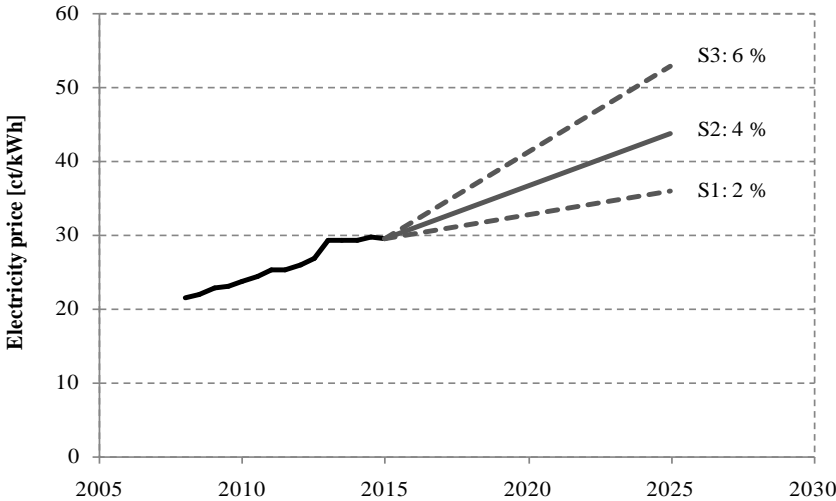


Fig. 5. Retail electricity price in Germany.

Due to the German EEG (*Erneuerbare Energien Gesetz*) the feed-in tariffs are guaranteed over the period of 20 years. For residential roof-mounted PV systems with a peak power of less than 10 kW_p the feed-in tariff is about 12.31 €ct/kWh (January 1, 2016) [20]. The dependency of the feed-in tariff will be discussed in subsection 3.2.2 further below.

Electricity Storage. Due to the fact that today only a few electric vehicles are being retired, there exists no real market for the second-use batteries yet. Neubauer et al. [21] estimated a value for refurbished electric vehicle batteries by calculating the maximum selling price assuming that the refurbished batteries compete with new batteries and have to be cost-competitive. They estimate a re-purposed battery selling price between 38 US\$/kWh and 132 US\$/kWh (34 €/kWh to 117 €/kWh) and end-user system costs of 100 US\$/kW (89 €/kW) for power conditioning, controls and interfaces. The installation and startup costs are assumed to be 52 US\$/kWh (46 €/kWh). For the maintenance costs, different studies vary between 1.5% and 6% of the investment costs; for our analysis a value of 3% is chosen. The economic parameter values used are reported in Table 1.

Table 1 Input parameters for the economic model

Location: Stuttgart, Germany	Value	[Unit]
Installed PV peak power	5	[kW _p]
Annual electricity consumption	3892	[kWh]
Battery size	4–8	[kWh BOL]
Battery capacity at the beginning of the second life	80	[%]
Inflation p.a.	1.74	[%]
Nominal discount rate	4	[%]
Feed-in tariff	12.31	[€ct kWh ⁻¹]
Battery selling price	34–117	[€/kWh ⁻¹]
Battery power conditioning, controls and interface	89	[€/kW ⁻¹]
Battery installation and startup costs	46	[€/kWh ⁻¹]
Battery maintenance costs (% of investment costs)	3	[%]

2.3 Technical approach and modeling

The question which components and which level of detail are necessary to be modeled can only be answered considering the specific research issue. In this case the time-dependent amount of generated electricity and the battery state are crucial. The modeling was done in MATLAB/Simulink which is a graphical programming environment for modeling, simulating and analyzing multi-domain dynamic systems. The layout of the integrated PV-storage system considered is shown in Figure 6.

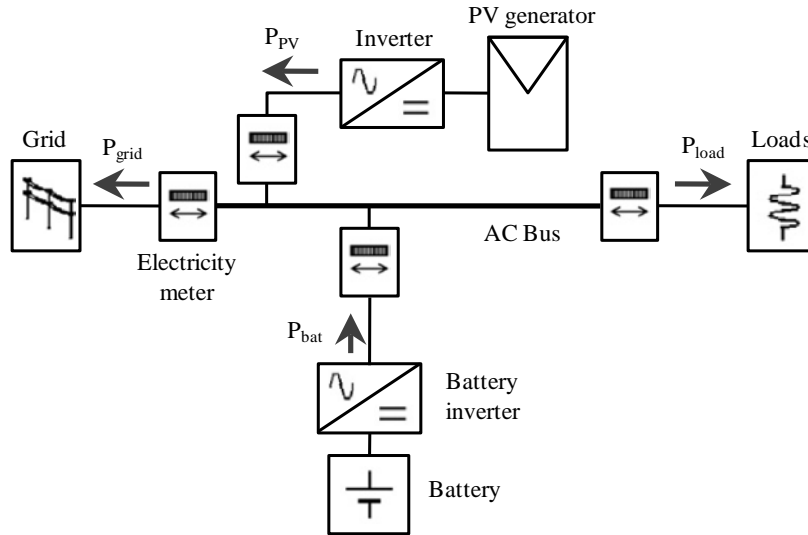


Fig. 6. Topology of integrated PV-storage system [22].

The PV generator provides electricity which will be transformed from DC (direct current) to AC (alternating current) and partially or completely consumed by the electric load. If there is a surplus of generated electricity it can be fed into the grid or stored in the battery if the battery is not fully charged. In the second case, it has to be transformed into DC again before it can be stored. Every transformation results in an energy loss that has to be taken into account.

If the electricity demand exceeds the generated electricity the difference can be provided by the grid or the battery storage if the SOC (state of charge) is above the lower limit. In order to be economically as well as technically efficient this system topology is the most widely used in the literature for residential applications [1].

2.3.1 Power generation

The performance of the PV modules depends not only on the solar irradiation, but is also affected by a number of other important effects [23]: (1) The temperature of the PV module; (2) Nonlinearities of the conversion efficiency dependent on the irradiance level and module temperature; (3) The reflection on the module surface; and (4) The spectral sensitivity of the module type.

In this paper, the performance is calculated according to a mathematical approach presented by Huld et. al. [24] concerning the irradiation and the temperature of the module. The mathematical function was fitted with measured data and the parameters were developed for the crystalline silicon and the thin-film technology. Because of the dominant market share in existent applications (about 90% in 2013) [15], the dominant market share in the global production (above 90% in 2014) [24] and according to previous studies, crystalline silicon has

been chosen as PV technology. The input parameters of the model are the in-plane irradiance G and the module temperature T_{mod} . With P_{STC} as the power at standard test conditions (STC) of $G_{\text{STC}} = 1000 \text{ W/m}^2$ and $T_{(\text{mod_STC})} = 25 \text{ }^\circ\text{C}$ the power output is given by:

$$P(G, T_{\text{mod}}) = P_{\text{STC}} \cdot G / G_{\text{STC}} \cdot \eta_{\text{rel}}(G', T) \quad (2)$$

The instantaneous relative efficiency η_{rel} depends on six parameters k_1 to k_6 which are fitted to experimental data. The solar irradiation data as well as the ambient temperature was obtained from a database provided by the DWD (*Deutscher Wetterdienst*) for Stuttgart (station no. 04928) [16]. For use in the model, the dataset has to be transformed in two ways. The solar irradiation has to be projected onto the plane of the PV module and the ambient temperature has to be converted to the module temperature. The adjustment of the temperature can be made by the coefficient c_T [23] as follows:

$$T_{\text{mod}} = T_{\text{amb}} + c_T \cdot G. \quad (3)$$

The coefficient c_T describes the modules' temperature difference to the ambient temperature due to solar irradiation and is primarily dependent on the way the module is mounted. For rooftop-integrated PV modules, a value of $(0.05 \text{ }^\circ\text{C})(\text{W m}^2)$ is chosen [25].

In order to project the solar irradiation onto the plane of the PV module the actual position of the sun has to be known. The position is described by the azimuth and the altitude (or elevation angle) and is shown in Figure 7. In our analysis, it has been calculated according to the approach suggested in Reda et al. [26] for the latitude of Stuttgart, and corrected by the difference between solar apparent and mean time using the equation of time [26].

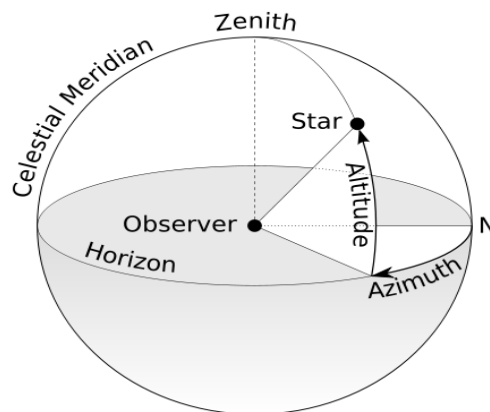


Fig. 7. Coherences between altitude, azimuth and the position.

Now the position of the sun is known at every time step of the simulation, and the actual in-plane irradiation is then calculated with the geometrical relations. For the location of Stuttgart,

a tilt of 30° and a southward orientation has been chosen. Depending on the installed capacity, the annual power generation is about 980 kWh/kW_p for an average year. This of course depends on the actual solar irradiation as well. The efficiency of the inverter has been assumed at 98%, according to several other studies. The parameter values used for the simulated PV system are reported in Table 2 (left-hand side).

Table 2 Input parameters for the technical model (left two columns: PV system, right two columns: battery storage system)

Technology	Crystalline silicon	Technology	Lithium-ion
Installation	Rooftop-integrated	Heat capacity	900 J (kg·°C) ⁻¹ [29]
Location	Stuttgart, Germany	Heat transfer coefficient	10 W (m ² ·K) ⁻¹ [30]
Latitude	48.8282° N	Specific energy	120 Wh kg ⁻¹ [31]
Longitude	9.2000° E	Energy density	230 Wh l ⁻¹ [31]
Tilt	30°	Ambient temperature	13°C [32]
Orientation	Southward	Technology	Lithium-ion
Annual electricity generation	~980 kWh (kW _p) ⁻¹	Heat capacity	900 J (kg·°C) ⁻¹
Efficiency of the inverter	98%	Heat transfer coefficient	10 W (m ² ·K) ⁻¹

2.3.2 Energy storage

In order to estimate the economic viability of a repurposed second-life battery in residential applications the prediction of degradation and aging of the battery is a crucial element of the simulation. There are many individual effects and mechanisms that, in combination, lead to aging of the battery pack. While electrolyte decomposition (capacity loss) and the formation of a solid electrolyte interphase (SEI, increase of inner resistance) are mostly the dominant aging processes, further mechanisms are described by Vetter et al. [27]. Physical-chemical simulation approaches try to focus on a single mechanism and describe its impact while other approaches focus on the measured aging under real operating conditions isolated from single mechanisms and try to predict the aging in total. Due to the fact that tests under real operating conditions are quite expensive and time-consuming, most models use data from accelerated aging tests and try to adjust the results to the real operating conditions. In our study, an approach by Ecker et al. [28] is chosen to predict the loss of capacity and the increase of the inner resistance leading to a decrease of the efficiency. The following equation was used to describe the evolution of capacity and inner resistance and it can be derived to fit the data from accelerated aging tests:

$$L(t, T, V) = L(t_0, T, V) \cdot [1 + B(T, V) \cdot F(t)] \quad (4)$$

In this approach, the time dependency is described by the term

$$F(t) = c_a \cdot t^\beta \quad (5)$$

where c_a describes the rate of aging at reference conditions (T_0, V_0) and β becomes 0.5 under the assumption that electrolyte composition and the correspondent SEI formation are the dominant aging processes. $B(T, V)$ describes the temperature and potential dependency according to:

$$B(T, V) = c_T^{((T - T_0)/\Delta T)} \cdot c_V^{((V - V_0)/\Delta V)} \quad (6)$$

The two factors describe the impact of a temperature and potential increase on the aging process, meaning that an increase of ΔT leads to an increase of c_T compared to the reference conditions set to $T_0 = 25 \text{ }^\circ\text{C}$ and $V_0 = 3.5 \text{ V}$. ΔT was chosen at $10 \text{ }^\circ\text{C}$ and ΔV at 0.1 V . The parameters c_a , c_T and c_V have been fitted so the equation minimizes the deviation to the measured data.

The actual temperature of the battery pack was estimated with a simple thermal model using one thermal mass and heat transfer by natural convection. The power loss in the battery causes a heat input and thereby an increase of the temperature according to the heat capacity of the battery pack. As there is a temperature gradient between the ambient temperature and the battery temperature a heat flow to the colder part occurs. The larger the temperature difference is the higher is the heat flow. In steady-state conditions the heat flow is equal to the power loss. Figure 8 shows the relations between the different parameters/quantities involved.

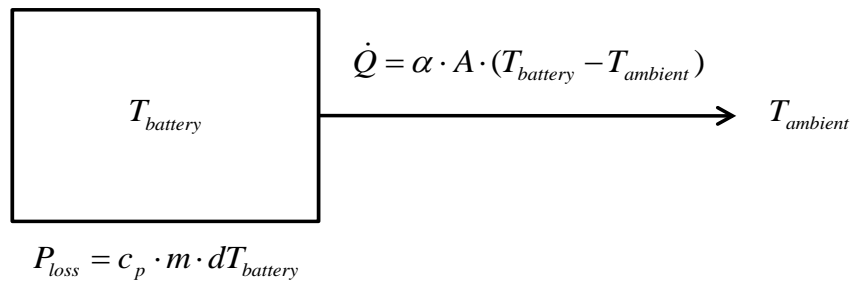


Fig. 81. Scheme of the thermal model.

In order to scale the size of the battery system the values of the area A and the mass m are defined by the energy density and the specific energy. To calculate the area a cubic form is assumed. The ambient temperature is chosen as an annual mean value for a basement, assuming that it will mostly be installed in there. The parameters used are depicted in Table 2 (right-hand side).

Three scenarios are considered for the development of the electricity retail price in Germany. We assume that prices escalate annually between 2-6% over the ten years from 2015-2025.

Specifically, Scenario S1 (low) assumes 2% p.a., S2 (medium) 4% p.a., and S3 (high) 6% p.a. of price escalation. In Germany, from 2008-2015 the price increased on average by about 4%.

3. Results

3.1 General model outputs

In this section we report on general model results, enabling to compare the model's behavior and results with those from other studies. Figure 9 shows the simulation output for PV electricity generation and electricity consumption over the time period of one year. Without an energy storage system there is a strong mismatch between energy generation and demand. Figure 10 depicts the behavior of battery capacity and inner resistance over the examined period of ten years. The capacity starts at 80% of its beginning of life (BOL) value, as this is the remaining capacity at the time the battery is replaced in the electric vehicle. Over the second life the available capacity decreases to roughly 60% of its original capacity. At the same time the inner resistance increases from 150% to 320% of its BOL value. The increasing inner resistance results in a decrease of the efficiency due to power losses.

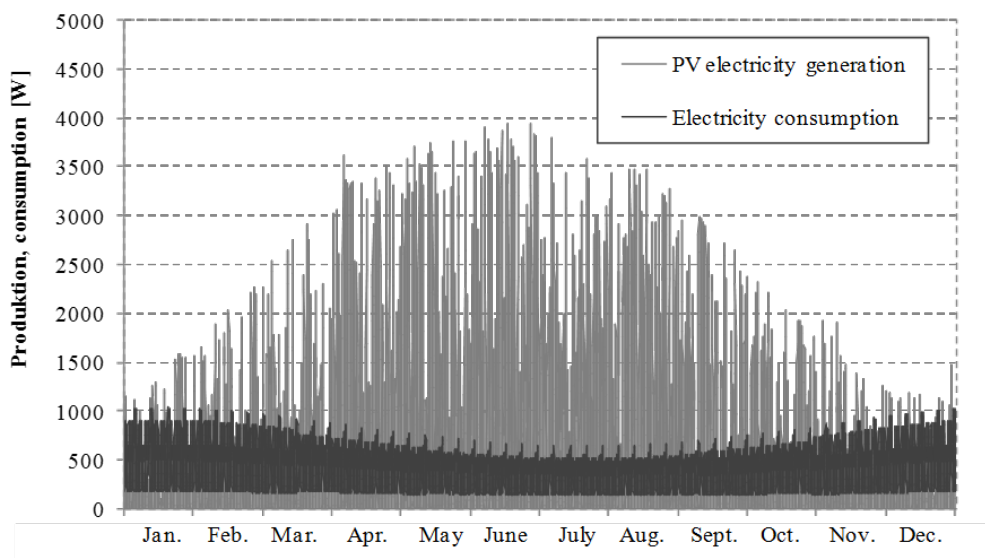


Fig.9. PV electricity generation and electricity consumption over the duration of one year.

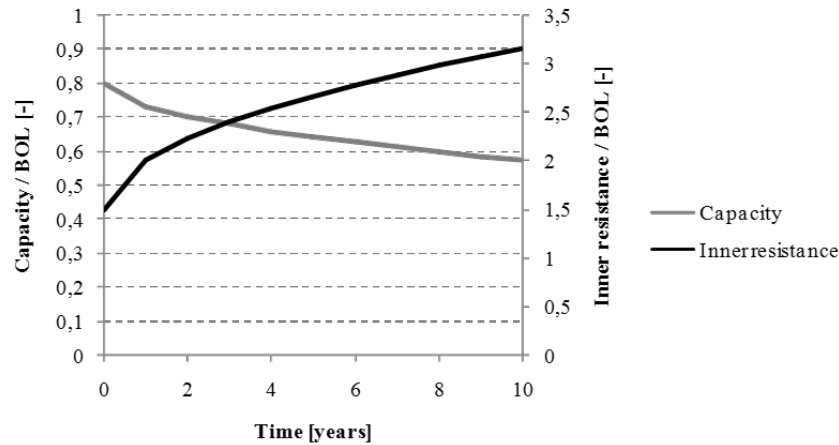


Fig. 20. Development of the battery capacity and inner resistance over the examined time period of 10 years.

3.2 Viability of second-life batteries

In this section the viability of investments in second-life batteries is discussed and the profitability evaluated. The input parameters create cash flows which are constantly discounted and added over time. The NPV is calculated for a time period of 10 years and results in values between €326 and €825, depending on the chosen scenario and battery price. Figure 11 shows the NPV over the battery price per kWh. It is decreasing with increasing battery price and increasing with increasing net increase of the electricity price. The NPV in scenario S3, which represents a high net increase of the electricity price by 6% per year, is positive over the entire time span examined. Scenario S2 represents the expected net increase of the electricity price by 4% per year and the breakeven point is reached at a battery selling price of 107 €/kWh. For a net increase of the electricity price by 2% (S1) the breakeven point is reached at a battery price of 73 €/kWh. In Figure 13 the NPV is plotted against the installed storage capacity and the battery price. The installed PV peak power is about 5 kW_p. The maximum NPV is reached for an installed storage capacity of about 5.5 kWh BOL and a battery price of 117 €/kWh, rising to about 7 kWh BOL as the battery price decreases. This is in line with the existing literature, e.g. [13], which proposes the rule-of-thumb “1 kWh per 1 kW_p“ installed PV power. In the case of second-life batteries, however, the initial capacity loss has to be taken into account.

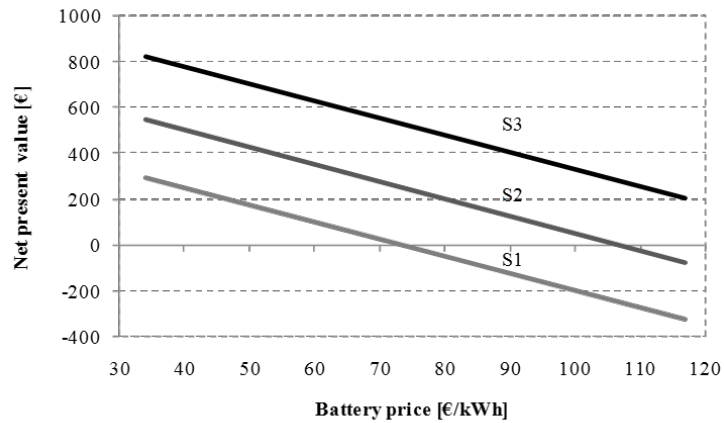


Fig. 31. Net present value for different scenarios and battery prices.

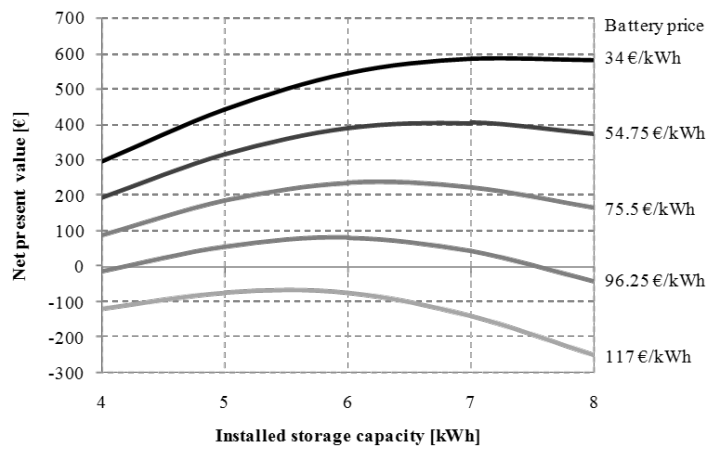


Fig. 12. Optimal storage size.

3.3 Sensitivity analysis

The sensitivity analysis illustrates how the NPV changes when varying the given parameters. It is important for estimating the influence of a certain parameter and can be used to identify crucial values. Figure 13 shows a tornado graph of the most important input parameters. The value of the feed-in tariff is the most influencing factor and thus has to be well estimated. This is not crucial though because the feed-in tariff is fixed for the duration of the investment.

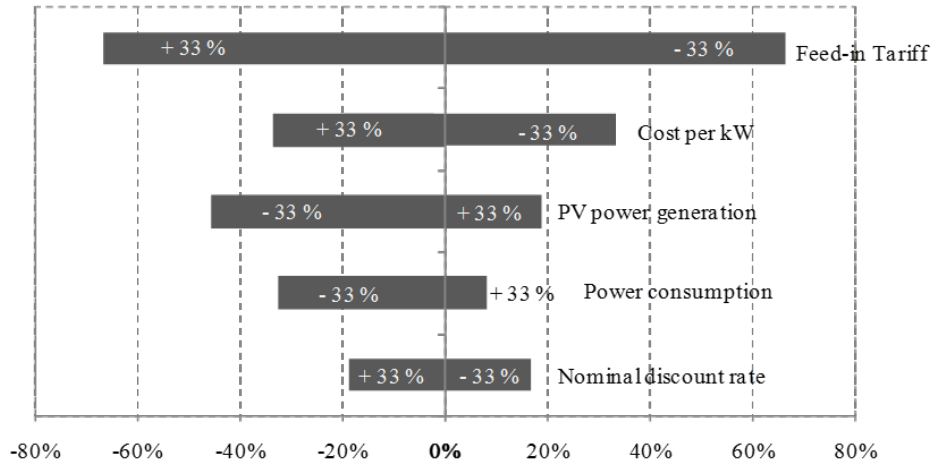


Fig. 13. Sensitivity analysis.

4. Discussion

4.1 Implications for homeowners

The presented results have shown that investments in second-use battery storage systems are profitable for the homeowner under certain circumstances. For an annual increase of the electricity tariff by and 6% (S3) an economic viability is found for all estimated battery costs. The NPV varies from about €800 to €200. For scenarios S1 and S2 the profitability depends on the actual battery selling price per kWh. In scenario S2 the breakeven point is reached at a battery selling price of 107 €/kWh, while in scenario S1 a price of 73 €/kWh is necessary. For future investments an expected decreasing guaranteed feed-in tariff will increase the viability of the storage. For the economic viability of the battery storage, the difference between the electricity price and the feed-in tariff is crucial. At the moment the private homeowner benefits from the exemption from electricity taxes, the EEG apportionment and grid fees for the self-consumed self-generated electricity, provided the PV systems size is smaller than 10 kW_p [15]. This puts an increasing burden on the other consumers and with an increasing number of PV systems this may change in the future. It has to be acknowledged that several differences may appear to the real operating conditions since for example the location and therefore the solar irradiation will vary. The electric load profile is a standardized demand pattern that will differ from the real demand. Furthermore, the operating strategy will mostly be different for optimizing the grid support and may influence the viability as well.

4.2 Implications for the environment

If electric vehicles and vehicles with internal combustion engine are compared, then from an environmental perspective both the initial material and energy investment have to be considered. For electric vehicles this applies especially for the production of large battery packs. In a lifecycle view the higher resource expense for electric vehicles in the beginning can be more than compensated over the time of use. After the use in the electric vehicle, the battery can be recycled or reused, and the automotive industry has shown high recycling rates for lead-acid batteries (although for Li-ion batteries recycling may be more restrictive). Further benefits are possible for a re-used battery after the life in the car and recycling is still possible after a second and even a third life. Ahmadi et al. [33] examined the possible CO₂ savings which result from a re-use of electric vehicle batteries. Challenges are of course the collection and the removal of the used batteries because of hazards through high voltage or the handling of liquid coolant. The collected batteries had to be disassembled and sorted by cell chemistry and type and then reassembled. However, the study showed a 56% reduction in life cycle CO₂ emissions by the use of refurbished electric vehicle batteries for peaking power applications [33].

4.3 Implications for the electricity sector

Due to the fact that the prospects regarding the economic viability of residential battery storage systems look very promising for various reasons, the number of installed units can be expected to increase further rapidly in the upcoming years. In addition, the share of renewables is very likely to continue to increase. This development certainly will have an impact on the electricity sector and some implications are presented in this section. Energy storage systems are expected to shave the peak that PV systems generated during the daytime and, as a result, decrease the burden for the electric grid. Whether a battery in a household accomplishes this goal or not is pretty much dependent on the operating strategy employed. For the rational homeowner, the strategy should be to maximize profit and to maximize the self-consumption rate. The conventional strategy is to charge the battery if the power generated by the PV system exceeds the load and to discharge the battery if the load exceeds the power generated by the PV system. Especially in the summer, the battery is likely to be fully charged before the highest peak arises around noon. In this case, the battery cannot fulfill its role of peak-shaving. Increasing the capacity of the installed battery may be a solution but leads to the problem that a complete discharge is mostly not possible in the summer. An operating strategy that is not grid-optimized is found to have no or near to no positive effects on the electric grid as it still has to be designed for the maximal annual peak [34]. A different approach is followed by the

grid-optimized operating strategy. In this case, the battery is charged when the PV generation output is the highest in order to minimize the feed-in power peak. To generate the same profit for the homeowner, the self-consumption rate has to be as high as before. Because of the predictive character an accurate forecast of solar irradiation and the load has to be available. Since a perfect forecast is not available [34], the profit will be less than with the conventional operating strategy. The goal is to make the forecasts as accurate as possible and it may be thought about using incentives to run this strategy as well. Figure 14 illustrates the differences between the conventional and the grid-optimized strategies over the course of a day.

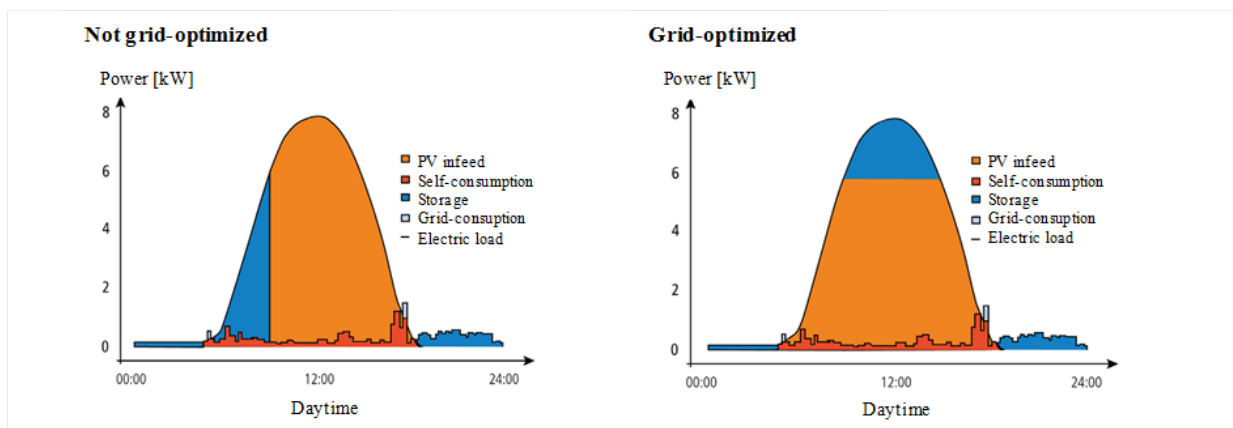


Fig. 44. Comparison of (a) non grid-optimized; and (b) grid-optimized battery operating strategies. *Source:* [34], p.4.

4.4 Implications for policy makers

For policy-making every action and measure has to serve a predefined goal. Battery storage systems by itself do not provide positive effects to the electricity market. By optimizing the operating strategy, however, they can help to relieve the electric grid and lower the peak from renewable energy sources. So policy makers have to ensure that a grid-optimized operating strategy is implemented in the funded storage system. The results of our study show that under certain circumstances the integration of used batteries in PV systems is profitable even without additional economic incentives. If the investment is currently not profitable, or if the development is found to be faster, policy makers can support the progress by several measures. All measures that raise the gap between retail price and feed-in tariff are expected to raise profitability. In this context raising the taxes and charges for self-consumed electricity will lower profitability but may be necessary as the number of residential PV systems rises. In Germany, the federal government fosters the use of stationary battery storage systems which are connected with a PV system by low-interest loan programs and repayment bonuses [35]. To receive the funding the PV system has to be smaller than 30 kW_p and be operated at least for

five years. More importantly, the operating strategy is defined as well. The integrated PV-storage system has to ensure that only 50% of the installed PV power is fed into the grid and the inverter must have an open interface for remote control and parametrization. As it is implemented at the moment the program does not apply to used battery storage systems. It may be worth considering to extend that program onto repurposed batteries as well if the market has grown.

4.5 Implications for car manufacturers

The high cost of lithium-ion batteries is a major barrier for the political goal of one million electric vehicles in Germany until 2020 and the market growth of electric vehicles in itself. Establishing a market for second-use batteries could lower the battery costs and raise the market share of electric vehicles, although Neubauer et al. [21] found that battery second-use is unlikely to have a notable impact on today's battery prices [21]. Nevertheless, many automotive companies are starting projects to gather experience in second-use applications and found collaborations with battery manufacturers and electricity companies.

5. Conclusion

When traction batteries of electric or hybrid electric vehicles reach a capacity of 80% or lower they are often considered to have reached their end-of-life because of the limited range. Nevertheless, they retain a considerable amount of storage capacity which can be utilized in subsequent applications. A conceivable application for second-use batteries is residential load-shifting and peak-shaving in combination with a PV system. Previous studies examined the economic viability of new storage systems and lead-acid batteries in particular. Other studies evaluated the profitability of retired EV batteries but neglect the batteries' further degradation. We evaluate conditions under which investments in repurposed battery storage systems will become economically viable. Therefore, a simulation model of a household with an integrated PV-storage system has been developed and parameterized for the electricity demand of a typical three-person household and a location in Southern Germany. The conditions under which investments are profitable have been examined for three scenarios. Scenario S2 covers the expected net increase of the electricity price by 4% per year. Upward and downward deviations from scenario S2 are covered by scenario S1 and scenario S3. For the scenario with the highest increase of the electricity price investments in storage systems are found to be profitable for all expected battery cost levels. In scenario S2, the breakeven battery price is found to be 107 €/kWh and in the scenario with the lowest increase of the electricity price the battery price has

to be equal to, or less than, 73 €/kWh. We also evaluate the optimal storage size, which is approximately the PV system's peak power in kWh (so the optimal storage size of the 5 kW_p PV system examined is about 5 kWh, and for the case of second-use batteries about 6 kWh BOL when compensating the initial capacity loss). The optimal storage size depends on the battery costs as well as on the costs for additional equipment and maintenance.

In order to give some guidance to involved parties, some implications were derived from the results. For homeowners, it is important to recognize that investments in second-use battery storage units can be profitable under certain conditions even without financial incentives. The environment will benefit as well from using batteries after the first life in the car instead of recycling. In other studies, it has been found in the literature that through the use of refurbished electric vehicle batteries a 56% reduction in lifecycle CO₂ emissions is possible. For the electricity sector the operating strategy of the integrated PV-storage system is a crucial part. Only with grid-optimized operating strategies positive effects on the electricity grid are achievable. The battery has to be charged at times when the power generation peak is highest in order to relieve the electric grid. Grid-optimized operating strategies require precise forecasts if they should be as profitable as operating strategies that are not grid-optimized. In order to foster only those storage systems supporting the electric grid the KfW program for PV-storage systems has included the grid-optimized operating strategy in its eligibility conditions. Finally, it should be noticed that the simulation model developed in our study is flexible regarding the input parameters and can be parameterized to examine a number of further research questions.

Acknowledgments

The authors gratefully acknowledge the comments received from several reviewers and participants of the ICAE 2016 conference. An earlier, shortened version of this paper was presented at the ICAE 2016 held on October 8-11, 2016, in Beijing, China. This paper is a substantial extension of the conference paper, which was published in *Energy Procedia* and as *FCN Working Paper No. 7/2016* [14].

References

- [1] Hoppmann J, Volland J, Schmidt T S, et al., The economic viability of battery storage for residential solar photovoltaic systems – A review and a simulation model. *Renewable and Sustainable Energy Reviews* 2014;39:1101–18.
- [2] Joshi A S, Dincer I, Reddy B V, Performance analysis of photovoltaic systems. A review. *Renewable and Sustainable Energy Reviews* 2009;13(8):1884–97.

- [3] Eltawil M A, Zhao Z, Grid-connected photovoltaic power systems. Technical and potential problems—A review. *Renewable and Sustainable Energy Reviews* 2010;14(1):112–29.
- [4] Bost M, Hirschl B, Aretz A. Effekte von Eigenverbrauch und Netzparität bei der Photovoltaik: Beginn der dezentralen Energierevolution oder Nischeneffekt? Berlin/Hamburg; 2011.
- [5] Braun M, Büdenbender K, Magnor D, et al. Photovoltaic Self-Consumption in Germany Using Lithium-Ion Storage to Increase Self-Consumed Photovoltaic Energy. In: W. Sinke (ed.), *The compiled state-of-the-art of PV solar technology and deployment*. 24th European Photovoltaic Solar Energy Conference and Exhibition (conference September 21-25, 2009; exhibition September 21-24, 2009) – EU PVSEC, Hamburg, Munich: WIP-Renewable Energies, 2009.
- [6] Colmenar-Santos A, Campiñez-Romero S, Pérez-Molina C, et al. Profitability analysis of grid-connected photovoltaic facilities for household electricity self-sufficiency. *Energy Policy* 2012;51:749–64.
- [7] Greencharge Networks, Nissan and 4R Energy Partner with Green Charge Networks for Commercial Energy Storage Featuring Second-Life Electric Vehicle Batteries (2015), <<http://www.greencharge.net/nissan-and-4r-energy-partner-with-green-charge-networks-for-commercial-energy-storage-featuring-second-life-electric-vehicle-batteries/>>, accessed January 30, 2016.
- [8] Toyota, Toyota Flips the Switch to Sustainable Power at Yellowstone National Park(2015)<<http://www.toyotanewsroom.com/releases/toyota+sustainable+power+yellowstone+may12.htm>>, accessed January 30, 2016.
- [9] Daimler AG, THE MOBILITY HOUSE AG, GETEC ENERGIE AG, REMONDIS SE, Elektromobilität zu Ende gedacht: Weltweit größter 2nd-Use-Batteriespeicher geht in Kürze ans Netz, Madeleine Herdlitschka (Lünen/Stuttgart, 2015).
- [10] Robert Bosch GmbH, Bosch kooperiert mit BMW und Vattenfall: Batterien aus Elektroautos für einstabiles Stromnetz, Projekt „Second Life Batteries“, Thilo Resenhoft (Stuttgart, 2015), <<http://www.bosch-presse.de/presseforum/pressdownload/text/PI8780.pdf?id=7067,1>>, accessed January 11, 2016.
- [11] Battke B, Schmidt TS, Grosspietsch D, et al. A review and probabilistic model of lifecycle costs of stationary batteries in multiple applications. *Renewable and Sustainable Energy Reviews* 2013;25:240–50.

- [12] Pawel I, The Cost of Storage – How to Calculate the Levelized Cost of Stored Energy (LCOE) and Applications to Renewable Energy Generation. Energy Procedia 2014;46:68–77.
- [13] Naumann M, Karl RC, Truong CN, et al. Lithium-ion Battery Cost Analysis in PV-household Application. Energy Procedia 2015;73:37–47.
- [14] Kirmas A, Madlener R, Economic Viability of Second-Life Electric Vehicle Batteries for Energy Storage in Private Households. FCN Working Paper No. 7/2016, RWTH Aachen University, Aachen, Germany.
- [15] Wirth H, Aktuelle Fakten zur Photovoltaik in Deutschland, Fraunhofer-Institut für Solare Energiesysteme ISE
 <<https://www.ise.fraunhofer.de/de/veroeffentlichungen/veroeffentlichungen-pdf-dateien/studien-und-konzeptpapiere/aktuelle-fakten-zur-photovolta>,
 <<https://www.ise.fraunhofer.de/de/veroeffentlichungen/veroeffentlichungen-pdf-dateien/studien-und-konzeptpapiere/aktuelle-fakten-zur-photovoltaik-in-deutschland.pdf>>, accessed March 9, 2016.
- [16] DWD Climate Data Center (CDC), Hourly station observations of solar irradiation, version v0.1, 2015 <ftp://ftp-cdc.dwd.de/pub/CDC/observations_germany/climate/hourly/solar/>, updated March 9, 2016.
- [17] New Netz GmbH, Standardlastprofile nach BDEW (SLP), 2016 <<https://www.new-netz-gmbh.de/stromnetz/netzzugang/lastprofile/>>, accessed March 25, 2016.
- [18] Heymans C, Walker S B, Young S B, et al., Economic analysis of second use electric vehicle batteries for residential energy storage and load-levelling. Energy Policy 2014;71:22–30.
- [19] Eurostat, HICP – inflation rate. Harmonised Indices of Consumer Prices’, 2016 <<http://ec.europa.eu/eurostat/tgm/table.do?tab=table&plugin=1&language=de&pcode=tec00118>>, updated March 18, 2016; accessed March 25, 2016.
- [20] Bundesnetzagentur (BNetzA), Degressions- und Vergütungssätze Januar bis März 2016’, <http://www.bundesnetzagentur.de/DE/Sachgebiete/ElektrizitaetundGas/Unternehmen_Institutionen/ErneuerbareEnergien/Photovoltaik/DatenMeldgn_EEG-VergSaetze/DatenMeldgn_EEG-VergSaetze_node.html>, updated February 29, 2016; accessed March 25, 2016.

- [21] Neubauer J, Pesaran A, The ability of battery second use strategies to impact plug-in electric vehicle prices and serve utility energy storage applications. *Journal of Power Sources* 2011;196(23):10351–8.
- [22] Castillo-Cagigal M, Caamaño-Martín E, Matallanas E, et al., PV self-consumption optimization with storage and Active DSM for the residential sector'. *Solar Energy* 2011;85(9):2338–48.
- [23] Huld T, Gottschalg R, Beyer H G, et al., Mapping the performance of PV modules, effects of module type and data averaging. *Solar Energy* 2010;84(2):324–38.
- [24] Philipps S, et al., Photovoltaics Report, Fraunhofer-Institut für Solare Energiesysteme ISE <<https://www.ise.fraunhofer.de/de/downloads/pdf-files/aktuelles/photovoltaics-report-in-englischer-sprache.pdf>>, accessed March 9, 2016.
- [25] Kratochvil J A., Boyson W E, King D L, Photovoltaic Array Performance Model, Albuquerque, New Mexico, 2004.
- [26] Reda I, Andreas A, Solar Position Algorithm for Solar Radiation Applications (Revised), Technical Paper No. TP-560-34302, National Renewable Energy Laboratory (NREL), Golden, CO, January 2008.
- [27] Vetter J, Winter M, Wohlfahrt-Mehrens M, Secondary Batteries – Lithium Rechargeable Systems – Lithium-Ion | Aging Mechanisms, in: *Encyclopedia of Electrochemical Power Sources*, Elsevier, 2009, 393–403.
- [28] Ecker M, Gerschler J B, Vogel J, et al., Development of a lifetime prediction model for lithium-ion batteries based on extended accelerated aging test data. *Journal of Power Sources* 2012;215:248–57.
- [29] Pesaran A A, Thermal Characteristics of Selected EV and HEV Batteries, Conference Paper (Annual Battery Conference: Advances and Applications), National Renewable Energy Laboratory (NREL), 2001.
- [30] VDI-Gesellschaft Verfahrenstechnik und Chemieingenieurwesen, VDI-Wärmeatlas, VDI-Buch; 11. bearb. und erw. Aufl., Berlin, Heidelberg: Springer, 2013.
- [31] Young K, Wang C, Wang L Y, et al., Electric Vehicle Battery Technologies, in: Rodrigo Garcia-Valle and João A. Peças Lopes (eds.), *Electric Vehicle Integration into Modern Power Networks*, New York, NY: Springer New York, 2013, 15–56.
- [32] Kreč K, Die Lufttemperatur im unbeheizten Kellergeschoß. eine Fallstudie. *Zeitschrift für Wärmeschutz, Kälteschutz, Schallschutz, Brandschutz* 1994;34:42–7.
- [33] Ahmadi L, Yip A, Fowler M, et al. Environmental feasibility of re-use of electric vehicle batteries. *Sustainable Energy Technologies and Assessments* 2014;6:64–74.

- [34] Hollinger R, Wille-Hausmann B, Erge T, et al. Speicherstudie 2013: Kurzgutachten zur Abschätzung und Einordnung energiewirtschaftlicher, ökonomischer und anderer Effekte bei Förderung von objektgebundenen elektrochemischen Speichern, Fraunhofer Inst, <<https://www.ise.fraunhofer.de/de/veroeffentlichungen/veroeffentlichungen-pdf-dateien/studien-und-konzeptpapiere/speicherstudie-2013.pdf>>, accessed March 16, 2016.
- [35] Kreditanstalt für Wiederaufbau (KfW), KfW-Programm Erneuerbare Energien "Speicher". Finanzierung von stationären Batteriespeichersystemen in Verbindung mit einer Photovoltaikanlage, 2016, updated 3/2016; accessed March 25, 2016.

List of FCN Working Papers

2016

- Frieling, J., Madlener, R. (2016). Estimation of Substitution Elasticities in Three-Factor Production Functions: Identifying the Role of Energy, FCN Working Paper No. 1/2016, Institute for Future Energy Consumer Needs and Behavior, RWTH Aachen University, March (revised September 2016).
- Al-Saad F., Madlener R. (2016). The Role of Shale Gas in the EU Decarbonization Process, FCN Working Paper No. 2/2016, Institute for Future Energy Consumer Needs and Behavior, RWTH Aachen University, March.
- de Graaf X., Madlener R. (2016). Optimal Time-Dependent Usage of Salt Cavern Storage Facilities for Alternative Media in Light of Intermittent Electricity Production and Carbon Sequestration, FCN Working Paper No. 3/2016, Institute for Future Energy Consumer Needs and Behavior, RWTH Aachen University, April.
- Weida J., Kumar S., Madlener R. (2016). Economic Viability of Grid-Connected Solar PV and Wind Power Systems in Germany: A Multi-Region Analysis, FCN Working Paper No. 4/2016, Institute for Future Energy Consumer Needs and Behavior, RWTH Aachen University, May.
- Franzen S., Madlener R. (2016). Optimal Expansion of a Hydrogen Storage System for Wind Power: A Real Options Analysis, FCN Working Paper No. 5/2016, Institute for Future Energy Consumer Needs and Behavior, RWTH Aachen University, June.
- Hammann E., Madlener R., Hilgers C. (2016). Economic Feasibility of Compressed Air Energy Storage Systems: A Real Options Approach, FCN Working Paper No. 6/2016, Institute for Future Energy Consumer Needs and Behavior, RWTH Aachen University, July.
- Kirmas A., Madlener R. (2016). Economic Viability of Second-Life Electric Vehicle Batteries for Energy Storage in Private Households, FCN Working Paper No. 7/2016, Institute for Future Energy Consumer Needs and Behavior, RWTH Aachen University, July (revised April 2017).

2015

- Michelsen C.C., Madlener R. (2015). Beyond Technology Adoption: Homeowner Satisfaction with Newly Adopted Residential Heating Systems, FCN Working Paper No. 1/2015, Institute for Future Energy Consumer Needs and Behavior, RWTH Aachen University, February.
- Garnier E., Madlener R. (2015). The Influence of Policy Regime Risks on Investments in Innovative Energy Technology, FCN Working Paper No. 2/2015, Institute for Future Energy Consumer Needs and Behavior, RWTH Aachen University, March (revised October 2015).
- Gläsel L., Madlener R. (2015). Optimal Timing of Onshore Repowering in Germany Under Policy Regime Changes: A Real Options Analysis, FCN Working Paper No. 3/2015, Institute for Future Energy Consumer Needs and Behavior, RWTH Aachen University, April.
- Böhmer M., Madlener R. (2015). Evolution of Market Shares of New Passenger Cars in Germany in Light of CO2 Fleet Regulation, FCN Working Paper No. 4/2015, Institute for Future Energy Consumer Needs and Behavior, RWTH Aachen University, April.
- Schmitz H., Madlener R. (2015). Heterogeneity in Residential Space Heating Expenditures in Germany, FCN Working Paper No. 5/2015, Institute for Future Energy Consumer Needs and Behavior, RWTH Aachen University, May (revised February 2016).

- Ruhnau O., Hennig P., Madlener R. (2015). Economic Implications of Enhanced Forecast Accuracy: The Case of Photovoltaic Feed-In Forecasts, FCN Working Paper No. 6/2015, Institute for Future Energy Consumer Needs and Behavior, RWTH Aachen University, June.
- Krings H., Madlener R. (2015). Modeling the Economic Viability of Grid Expansion, Energy Storage, and Demand Side Management Using Real Options and Welfare Analysis, FCN Working Paper No. 7/2015, Institute for Future Energy Consumer Needs and Behavior, RWTH Aachen University, July.
- Pon S. (2015). Effectiveness of Real Time Information Provision with Time of Use Pricing, FCN Working Paper No. 8/2015, Institute for Future Energy Consumer Needs and Behavior, RWTH Aachen University, August (revised October 2015).
- Glensk B., Rosen C., Madlener R. (2015). A Real Options Model for the Disinvestment in Conventional Power Plants, FCN Working Paper No. 9/2015, Institute for Future Energy Consumer Needs and Behavior, RWTH Aachen University, August.
- Rosen C., Madlener R. (2015). An Option-Based Approach for the Fair Pricing of Flexible Electricity Supply, FCN Working Paper No. 10/2015, Institute for Future Energy Consumer Needs and Behavior, RWTH Aachen University, August.
- Glensk B., Madlener R. (2015). Real Options Analysis of the Flexible Operation of an Enhanced Gas-Fired Power Plant, FCN Working Paper No. 11/2015, Institute for Future Energy Consumer Needs and Behavior, RWTH Aachen University, August.
- Madlener R., Lohaus M. (2015). Well Drainage Management in Abandoned Mines: Optimizing Energy Costs and Heat Use under Uncertainty, FCN Working Paper No. 12/2015, Institute for Future Energy Consumer Needs and Behavior, RWTH Aachen University, September.
- Chang N.C.P., Oberst C.A., Madlener R. (2015). Economic Policy Evaluation for the Deployment of Alternative Energy Sources in Brazil, FCN Working Paper No. 13/2015, Institute for Future Energy Consumer Needs and Behavior, RWTH Aachen University, October.
- Köhnke Mendonça C., Oberst C.A., Madlener R. (2015). The Future Expansion of HVDC Power Transmission in Brazil: A Scenario-Based Economic Evaluation. FCN Working Paper No. 14/2015, Institute for Future Energy Consumer Needs and Behavior, RWTH Aachen University, October (revised September 2016).
- Stähr F., Madlener R., Hilgers C., Holz F. (2015). Modeling the Geopolitics of Natural Gas: The Impact of Subsidized LNG Exports from the US to Eastern Europe, FCN Working Paper No. 15/2015, Institute for Future Energy Consumer Needs and Behavior, RWTH Aachen University, November.
- Schäfer D., Madlener R. (2015). Economic Evaluation of Ultra-Long Investments: A Case Study of Nuclear Waste Disposal, FCN Working Paper No. 16/2015, Institute for Future Energy Consumer Needs and Behavior, RWTH Aachen University, November.
- Kammerlocher M., Bostanjoglo N., Madlener R., Kurrat M. (2015). Revenue Analysis of Electric Vehicles as Pooled Ancillary Service Providers under Uncertainty, FCN Working Paper No. 17/2015, Institute for Future Energy Consumer Needs and Behavior, RWTH Aachen University, November.
- Esteve Soldado J.F., Wolff S., Madlener R. (2015). Environmental Impact of Electrifying Postal Delivery Fleets in Inner-City Districts: A Life-Cycle Assessment of the StreetScooter, FCN Working Paper No. 18/2015, Institute for Future Energy Consumer Needs and Behavior, RWTH Aachen University, November.
- Voss A., Madlener R. (2015). Auction Schemes, Bidding Strategies and the Cost-Optimal Level of Promoting Renewable Electricity in Germany, FCN Working Paper No. 19/2015, Institute for Future Energy Consumer Needs and Behavior, RWTH Aachen University, November.
- Weida J., Kumar S., Madlener R. (2015). Financial Viability of Grid-Connected Solar PV and Wind Power Systems in Germany, FCN Working Paper No. 20/2015, Institute for Future Energy Consumer Needs and Behavior, RWTH Aachen University, December.
- König M., Madlener R. (2015). Assessing Local Power Generation Potentials of Photovoltaics, Engine Cogeneration, and Heat Pumps: The Case of a Major Swiss City, FCN Working Paper No. 21/2015, Institute for Future Energy Consumer Needs and Behavior, RWTH Aachen University, December.
- Wessel M., Hilgers C., Madlener R. (2015). Turning Brown into Green Electricity: Economic Feasibility of Pumped Storage Hydro Power Plants in Open Pit Mines, FCN Working Paper No. 22/2015, Institute for Future Energy Consumer Needs and Behavior, RWTH Aachen University, December.

Walden R., Madlener R., Oberst C.A. (2015). Model-Based Economic Evaluation of the Participation of Private Households in a Local Energy Cluster, FCN Working Paper No. 23/2015, Institute for Future Energy Consumer Needs and Behavior, RWTH Aachen University, December.

Kumar S., Madlener R., Lehman A. (2015). A Multi-Scenario Cost-Benefit Analysis of the German Electricity Market in Light of New Energy and Environmental Policies, FCN Working Paper No. 24/2015, Institute for Future Energy Consumer Needs and Behavior, RWTH Aachen University, December.

2014

Sunak Y., Madlener R. (2014). Local Impacts of Wind Farms on Property Values: A Spatial Difference-in-Differences Analysis, FCN Working Paper No. 1/2014, Institute for Future Energy Consumer Needs and Behavior, RWTH Aachen University, February (revised October 2014).

Garnier E., Madlener R. (2014). Leveraging Flexible Loads and Options-based Trading Strategies to Optimize Intraday Effects on the Market Value of Renewable Energy, FCN Working Paper No. 2/2014, Institute for Future Energy Consumer Needs and Behavior, RWTH Aachen University, February.

Kerres B., Fischer K., Madlener R. (2014). Economic Evaluation of Maintenance Strategies for Wind Turbines: A Stochastic Analysis, FCN Working Paper No. 3/2014, Institute for Future Energy Consumer Needs and Behavior, RWTH Aachen University, March.

Loucao S., Madlener R. (2014). External Effects of Hydraulic Fracturing: Risks and Welfare Considerations for Water Supply in Germany, FCN Working Paper No. 4/2014, Institute for Future Energy Consumer Needs and Behavior, RWTH Aachen University, April.

Popov M., Madlener R. (2014). Backtesting and Evaluation of Different Trading Schemes for the Portfolio Management of Natural Gas, FCN Working Paper No. 5/2014, Institute for Future Energy Consumer Needs and Behavior, RWTH Aachen University, May.

Madlener R., Reismann T. (2014). The Great Pacific Garbage Patch: A Preliminary Economic Analysis of the 'Sixth Continent', FCN Working Paper No. 6/2014, Institute for Future Energy Consumer Needs and Behavior, RWTH Aachen University, May.

Blum J., Madlener R., Michelsen C.C. (2014). Exploring the Diffusion of Innovative Residential Heating Systems in Germany: An Agent-Based Modeling Approach, FCN Working Paper No. 7/2014, Institute for Future Energy Consumer Needs and Behavior, RWTH Aachen University, July.

Tejada R., Madlener R. (2014). Optimal Renewal and Electrification Strategy for Commercial Car Fleets in Germany, FCN Working Paper No. 8/2014, Institute for Future Energy Consumer Needs and Behavior, RWTH Aachen University, August.

Galvin R., Madlener R. (2014). Determinants of Commuter Trends and Implications for Indirect Rebound Effects: A Case Study of Germany's Largest Federal State of NRW, 1994-2013, FCN Working Paper No. 9/2014, Institute for Future Energy Consumer Needs and Behavior, RWTH Aachen University, September.

Garbuzova-Schlifter M., Madlener R. (2014). Risk Analysis of Energy Performance Contracting Projects in Russia: An Analytic Hierarchy Process Approach, FCN Working Paper No. 10/2014, Institute for Future Energy Consumer Needs and Behavior, RWTH Aachen University, October.

Kumar S., Madlener R., Suri I. (2014). An Energy System Analysis on Restructuring the German Electricity Market with New Energy and Environmental Policies, FCN Working Paper No. 11/2014, Institute for Future Energy Consumer Needs and Behavior, RWTH Aachen University, October.

Rosen C., Madlener R. (2014). Regulatory Options for Local Reserve Energy Markets: Implications for Prosumers, Utilities, and other Stakeholders, FCN Working Paper No. 12/2014, Institute for Future Energy Consumer Needs and Behavior, RWTH Aachen University, October.

Rosen C., Madlener R. (2014). Socio-Demographic Influences on Bidding Behavior: An Ex-Post Analysis of an Energy Prosumer Lab Experiment, FCN Working Paper No. 13/2014, Institute for Future Energy Consumer Needs and Behavior, RWTH Aachen University, November.

Kumar S., Madlener R. (2014). A Least-Cost Assessment of the CO₂ Mitigation Potential Using Renewable Energies in the Indian Electricity Supply Sector, FCN Working Paper No. 14/2014, Institute for Future Energy Consumer Needs and Behavior, RWTH Aachen University, November.

- Kammeyer F., Madlener R. (2014). Income Distribution Effects of the German *Energiewende*: The Role of Citizen Participation in Renewable Energy Investments, FCN Working Paper No. 15/2014, Institute for Future Energy Consumer Needs and Behavior, RWTH Aachen University, November.
- Höfer T., Sunak Y., Siddique H., Madlener R. (2014). Wind Farm Siting Using a Spatial Analytic Hierarchy Process Approach: A Case Study of the Städtereion Aachen, FCN Working Paper No. 16/2014, Institute for Future Energy Consumer Needs and Behavior, RWTH Aachen University, November.
- Garnier E., Madlener R. (2014). Day-Ahead versus Intraday Valuation of Demand Side Flexibility for Photovoltaic and Wind Power Systems, FCN Working Paper No. 17/2014, Institute for Future Energy Consumer Needs and Behavior, RWTH Aachen University, November.
- Sluzalek R., Madlener R. (2014). Trade-Offs when Investing in Grid Extension, Electricity Storage, and Demand Side Management: A Model-Based Analysis, FCN Working Paper No. 18/2014, Institute for Future Energy Consumer Needs and Behavior, RWTH Aachen University, November.
- Galassi V., Madlener R. (2014). Identifying Business Models for Photovoltaic Systems with Storage in the Italian Market: A Discrete Choice Experiment, FCN Working Paper No. 19/2014, Institute for Future Energy Consumer Needs and Behavior, RWTH Aachen University, December.
- Illian K., Madlener R. (2014). Short-Term Energy Storage for Stabilizing the High Voltage Transmission Grid: A Real Options Analysis, FCN Working Paper No. 20/2014, Institute for Future Energy Consumer Needs and Behavior, RWTH Aachen University, December.
- Oberst C.A., Madlener R. (2014). Regional Economic Determinants for the Adoption of Distributed Generation Based on Renewable Energies: The Case of Germany, FCN Working Paper No. 21/2014, Institute for Future Energy Consumer Needs and Behavior, RWTH Aachen University, December.
- Oberst C.A., Madlener R. (2014). Prosumer Preferences Regarding the Adoption of Micro-Generation Technologies: Empirical Evidence for German Homeowners, FCN Working Paper No. 22/2014, Institute for Future Energy Consumer Needs and Behavior, RWTH Aachen University, December.
- Harmsen – van Hout M.J.W., Madlener R., Prang C.D. (2014). Online Discussion among Energy Consumers: A Semi-Dynamic Social Network Visualization, FCN Working Paper No. 23/2014, Institute for Future Energy Consumer Needs and Behavior, RWTH Aachen University, December.
- Madlener R., Heesen F., Besch G. (2014). Determination of Direct Rebound Effects for Building Retrofits from Energy Services Demand, FCN Working Paper No. 24/2014, Institute for Future Energy Consumer Needs and Behavior, RWTH Aachen University, December.
- Heesen F., Madlener R. (2014). Technology Acceptance as Part of the Behavioral Rebound Effect in Energy Efficient Retrofitted Dwellings, FCN Working Paper No. 25/2014, Institute for Future Energy Consumer Needs and Behavior, RWTH Aachen University, December (revised February 2016).
- Schulz S., Madlener R. (2014). Portfolio Optimization of Virtual Power Plants, FCN Working Paper No. 26/2014, Institute for Future Energy Consumer Needs and Behavior, RWTH Aachen University, December.

2013

- Grieser B., Madlener R., Sunak Y. (2013). Economics of Small Wind Power Plants in Urban Settings: An Empirical Investigation for Germany, FCN Working Paper No. 1/2013, Institute for Future Energy Consumer Needs and Behavior, RWTH Aachen University, January.
- Madlener R., Specht J.M. (2013). An Exploratory Economic Analysis of Underground Pumped-Storage Hydro Power Plants in Abandoned Coal Mines, FCN Working Paper No. 2/2013, Institute for Future Energy Consumer Needs and Behavior, RWTH Aachen University, February.
- Kroniger D., Madlener R. (2013). Hydrogen Storage for Wind Parks: A Real Options Evaluation for an Optimal Investment in More Flexibility, FCN Working Paper No. 3/2013, Institute for Future Energy Consumer Needs and Behavior, RWTH Aachen University, February.
- Petersen C., Madlener R. (2013). The Impact of Distributed Generation from Renewables on the Valuation and Marketing of Coal-Fired and IGCC Power Plants, FCN Working Paper No. 4/2013, Institute for Future Energy Consumer Needs and Behavior, RWTH Aachen University, February.
- Oberst C.A., Oelgemöller J. (2013). Economic Growth and Regional Labor Market Development in German Regions: Okun's Law in a Spatial Context, FCN Working Paper No. 5/2013, Institute for Future Energy Consumer Needs and Behavior, RWTH Aachen University, March.

- Harmsen - van Hout M.J.W., Ghosh G.S., Madlener R. (2013). An Evaluation of Attribute Anchoring Bias in a Choice Experimental Setting. FCN Working Paper No. 6/2013, Institute for Future Energy Consumer Needs and Behavior, RWTH Aachen University, April.
- Harmsen - van Hout M.J.W., Ghosh G.S., Madlener R. (2013). The Impact of Green Framing on Consumers' Valuations of Energy-Saving Measures. FCN Working Paper No. 7/2013, Institute for Future Energy Consumer Needs and Behavior, RWTH Aachen University, April.
- Rosen C., Madlener R. (2013). An Experimental Analysis of Single vs. Multiple Bids in Auctions of Divisible Goods, FCN Working Paper No. 8/2013, Institute for Future Energy Consumer Needs and Behavior, RWTH Aachen University, April (revised November 2013).
- Palmer J., Sorda G., Madlener R. (2013). Modeling the Diffusion of Residential Photovoltaic Systems in Italy: An Agent-based Simulation, FCN Working Paper No. 9/2013, Institute for Future Energy Consumer Needs and Behavior, RWTH Aachen University, May.
- Bruns S.B., Gross C. (2013). What if Energy Time Series are not Independent? Implications for Energy-GDP Causality Analysis, FCN Working Paper No. 10/2013, Institute for Future Energy Consumer Needs and Behavior, RWTH Aachen University, June.
- Bruns S.B., Gross C., Stern D.I. (2013). Is There Really Granger Causality Between Energy Use and Output?, FCN Working Paper No. 11/2013, Institute for Future Energy Consumer Needs and Behavior, RWTH Aachen University, August.
- Rohlf W., Madlener R. (2013). Optimal Power Generation Investment: Impact of Technology Choices and Existing Portfolios for Deploying Low-Carbon Coal Technologies, FCN Working Paper No. 12/2013, Institute for Future Energy Consumer Needs and Behavior, RWTH Aachen University, August.
- Rohlf W., Madlener R. (2013). Challenges in the Evaluation of Ultra-Long-Lived Projects: Risk Premia for Projects with Eternal Returns or Costs, FCN Working Paper No. 13/2013, Institute for Future Energy Consumer Needs and Behavior, RWTH Aachen University, August.
- Michelsen C.C., Madlener R. (2013). Switching from dFossil Fuel to Renewables in Residential Heating Systems: An Empirical Study of Homeowners' Decisions in Germany, FCN Working Paper No. 14/2013, Institute for Future Energy Consumer Needs and Behavior, RWTH Aachen University, October.
- Rosen C., Madlener R. (2013). The Role of Information Feedback in Local Reserve Energy Auction Markets, FCN Working Paper No. 15/2013, Institute for Future Energy Consumer Needs and Behavior, RWTH Aachen University, November.
- Himpler S., Madlener R. (2013). A Dynamic Model for Long-Term Price and Capacity Projections in the Nordic Green Certificate Market, FCN Working Paper No. 16/2013, Institute for Future Energy Consumer Needs and Behavior, RWTH Aachen University, November.
- Weibel S., Madlener R. (2013). Cost-effective Design of Ringwall Storage Hybrid Power Plants: A Real Options Analysis, FCN Working Paper No. 17/2013, Institute for Future Energy Consumer Needs and Behavior, RWTH Aachen University, December.
- Budny C., Madlener R., Hilgers C. (2013). Economic Feasibility of Pipeline and Underground Reservoir Storage Options for Power-to-Gas Load Balancing, FCN Working Paper No. 18/2013, Institute for Future Energy Consumer Needs and Behavior, RWTH Aachen University, December.
- Johann A., Madlener R. (2013). Profitability of Energy Storage for Raising Self-Consumption of Solar Power: Analysis of Different Household Types in Germany, FCN Working Paper No. 19/2013, Institute for Future Energy Consumer Needs and Behavior, RWTH Aachen University, December.
- Hackbarth A., Madlener R. (2013). Willingness-to-Pay for Alternative Fuel Vehicle Characteristics: A Stated Choice Study for Germany, FCN Working Paper No. 20/2013, Institute for Future Energy Consumer Needs and Behavior, RWTH Aachen University, December.
- Katatani T., Madlener R. (2013). Modeling Wholesale Electricity Prices: Merits of Fundamental Data and Day-Ahead Forecasts for Intermittent Power Production, FCN Working Paper No. 21/2013, Institute for Future Energy Consumer Needs and Behavior, RWTH Aachen University, December.
- Baumgärtner M., Madlener R. (2013). Factors Influencing Energy Consumer Behavior in the Residential Sector in Europe: Exploiting the REMODECE Database, FCN Working Paper No. 22/2013, Institute for Future Energy Consumer Needs and Behavior, RWTH Aachen University, December.

Charalampous G., Madlener R. (2013). Risk Management and Portfolio Optimization for Gas- and Coal-Fired Power Plants in Germany: A Multivariate GARCH Approach, FCN Working Paper No. 23/2013, Institute for Future Energy Consumer Needs and Behavior, RWTH Aachen University, December.

Mallah S., Madlener R. (2013). The Causal Relationship Between Energy Consumption and Economic Growth in Germany: A Multivariate Analysis, FCN Working Paper No. 24/2013, Institute for Future Energy Consumer Needs and Behavior, RWTH Aachen University, December.

2012

Ghosh G., Shortle J. (2012). Managing Pollution Risk through Emissions Trading, FCN Working Paper No. 1/2012, Institute for Future Energy Consumer Needs and Behavior, RWTH Aachen University, January.

Palzer A., Westner G., Madlener M. (2012). Evaluation of Different Hedging Strategies for Commodity Price Risks of Industrial Cogeneration Plants, FCN Working Paper No. 2/2012, Institute for Future Energy Consumer Needs and Behavior, RWTH Aachen University, March (revised March 2013).

Sunak Y., Madlener R. (2012). The Impact of Wind Farms on Property Values: A Geographically Weighted Hedonic Pricing Model, FCN Working Paper No. 3/2012, Institute for Future Energy Consumer Needs and Behavior, RWTH Aachen University, May (revised March 2013).

Achtnicht M., Madlener R. (2012). Factors Influencing German House Owners' Preferences on Energy Retrofits, FCN Working Paper No. 4/2012, Institute for Future Energy Consumer Needs and Behavior, RWTH Aachen University, June.

Schabram J., Madlener R. (2012). The German Market Premium for Renewable Electricity: Profitability and Risk of Self-Marketing, FCN Working Paper No. 5/2012, Institute for Future Energy Consumer Needs and Behavior, RWTH Aachen University, July.

Garbuzova M., Madlener R. (2012). Russia's Emerging ESCO Market: Prospects and Barriers for Energy Efficiency Investments, FCN Working Paper No. 6/2012, Institute for Future Energy Consumer Needs and Behavior, RWTH Aachen University, July (revised September 2012).

Rosen C., Madlener R. (2012). Auction Design for Local Reserve Energy Markets, FCN Working Paper No. 7/2012, Institute for Future Energy Consumer Needs and Behavior, RWTH Aachen University, July (revised March 2013).

Sorda G., Madlener R. (2012). Cost-Effectiveness of Lignocellulose Biorefineries and their Impact on the Deciduous Wood Markets in Germany. FCN Working Paper No. 8/2012, Institute for Future Energy Consumer Needs and Behavior, RWTH Aachen University, September.

Madlener R., Ortlieb C. (2012). An Investigation of the Economic Viability of Wave Energy Technology: The Case of the Ocean Harvester, FCN Working Paper No. 9/2012, Institute for Future Energy Consumer Needs and Behavior, RWTH Aachen University, October.

Hampe J., Madlener R. (2012). Economics of High-Temperature Nuclear Reactors for Industrial Cogeneration, FCN Working Paper No. 10/2012, Institute for Future Energy Consumer Needs and Behavior, RWTH Aachen University, October.

Knaut A., Madlener R., Rosen C., Vogt C. (2012). Effects of Temperature Uncertainty on the Valuation of Geothermal Projects: A Real Options Approach, FCN Working Paper No. 11/2012, Institute for Future Energy Consumer Needs and Behavior, RWTH Aachen University, November.

Hünteler J., Niebuhr C.F., Schmidt T.S., Madlener R., Hoffmann V.H. (2012). Financing Feed-in Tariffs in Developing Countries under a Post-Kyoto Climate Policy Regime: A Case Study of Thailand, FCN Working Paper No. 12/2012, Institute for Future Energy Consumer Needs and Behavior, RWTH Aachen University, December.

Blass N., Madlener R. (2012). Structural Inefficiencies and Benchmarking of Water Supply Companies in Germany, FCN Working Paper No. 13/2012, Institute for Future Energy Consumer Needs and Behavior, RWTH Aachen University, December.

Madlener R., Schabram J. (2012). Predicting Reserve Energy from New Renewables by Means of Principal Component Analysis and Copula Functions, FCN Working Paper No. 14/2012, Institute for Future Energy Consumer Needs and Behavior, RWTH Aachen University, December.

- Harzendorf F., Madlener R. (2012). Optimal Investment in Gas-Fired Engine-CHP Plants in Germany: A Real Options Approach, FCN Working Paper No. 15/2012, Institute for Future Energy Consumer Needs and Behavior, RWTH Aachen University, December.
- Schmitz M., Madlener R. (2012). Economic Feasibility of Kite-Based Wind Energy Powerships with CAES or Hydrogen Storage, FCN Working Paper No. 16/2012, Institute for Future Energy Consumer Needs and Behavior, RWTH Aachen University, December.
- Dergiades T., Madlener R., Christofidou G. (2012). The Nexus between Natural Gas Spot and Futures Prices at NYMEX: Do Weather Shocks and Non-Linear Causality in Low Frequencies Matter?, FCN Working Paper No. 17/2012, Institute for Future Energy Consumer Needs and Behavior, RWTH Aachen University, December (revised September 2013).
- Rohlfs W., Madlener R. (2012). Assessment of Clean-Coal Strategies: The Questionable Merits of Carbon Capture-Readiness, FCN Working Paper No. 18/2012, Institute for Future Energy Consumer Needs and Behavior, RWTH Aachen University, December.
- Wüstemeyer C., Bunn D., Madlener R. (2012). Bridging the Gap between Onshore and Offshore Innovations by the European Wind Power Supply Industry: A Survey-based Analysis, FCN Working Paper No. 19/2012, Institute for Future Energy Consumer Needs and Behavior, RWTH Aachen University, December.
- Fuhrmann J., Madlener R. (2012). Evaluation of Synergies in the Context of European Multi-Business Utilities, FCN Working Paper No. 20/2012, Institute for Future Energy Consumer Needs and Behavior, RWTH Aachen University, December.

2011

- Sorda G., Sunak Y., Madlener R. (2011). A Spatial MAS Simulation to Evaluate the Promotion of Electricity from Agricultural Biogas Plants in Germany, FCN Working Paper No. 1/2011, Institute for Future Energy Consumer Needs and Behavior, RWTH Aachen University, January (revised October 2012).
- Madlener R., Hauertmann M. (2011). Rebound Effects in German Residential Heating: Do Ownership and Income Matter?, FCN Working Paper No. 2/2011, Institute for Future Energy Consumer Needs and Behavior, RWTH Aachen University, February.
- Garbuzova M., Madlener R. (2011). Towards an Efficient and Low-Carbon Economy Post-2012: Opportunities and Barriers for Foreign Companies in the Russian Market, FCN Working Paper No. 3/2011, Institute for Future Energy Consumer Needs and Behavior, RWTH Aachen University, February (revised July 2011).
- Westner G., Madlener R. (2011). The Impact of Modified EU ETS Allocation Principles on the Economics of CHP-Based District Heating Networks. FCN Working Paper No. 4/2011, Institute for Future Energy Consumer Needs and Behavior, RWTH Aachen University, February.
- Madlener R., Ruschhaupt J. (2011). Modeling the Influence of Network Externalities and Quality on Market Shares of Plug-in Hybrid Vehicles, FCN Working Paper No. 5/2011, Institute for Future Energy Consumer Needs and Behavior, RWTH Aachen University, March.
- Juckenack S., Madlener R. (2011). Optimal Time to Start Serial Production: The Case of the Direct Drive Wind Turbine of Siemens Wind Power A/S, FCN Working Paper No. 6/2011, Institute for Future Energy Consumer Needs and Behavior, RWTH Aachen University, March.
- Madlener R., Sicking S. (2011). Assessing the Economic Potential of Microdrilling in Geothermal Exploration, FCN Working Paper No. 7/2011, Institute for Future Energy Consumer Needs and Behavior, RWTH Aachen University, April.
- Bernstein R., Madlener R. (2011). Responsiveness of Residential Electricity Demand in OECD Countries: A Panel Cointegration and Causality Analysis, FCN Working Paper No. 8/2011, Institute for Future Energy Consumer Needs and Behavior, RWTH Aachen University, April.
- Michelsen C.C., Madlener R. (2011). Homeowners' Preferences for Adopting Residential Heating Systems: A Discrete Choice Analysis for Germany, FCN Working Paper No. 9/2011, Institute for Future Energy Consumer Needs and Behavior, RWTH Aachen University, May (revised January 2012).
- Madlener R., Glensk B., Weber V. (2011). Fuzzy Portfolio Optimization of Onshore Wind Power Plants. FCN Working Paper No. 10/2011, Institute for Future Energy Consumer Needs and Behavior, RWTH Aachen University, May.

- Glensk B., Madlener R. (2011). Portfolio Selection Methods and their Empirical Applicability to Real Assets in Energy Markets. FCN Working Paper No. 11/2011, Institute for Future Energy Consumer Needs and Behavior, RWTH Aachen University, May.
- Kraas B., Schroedter-Homscheidt M., Pulvermüller B., Madlener R. (2011). Economic Assessment of a Concentrating Solar Power Forecasting System for Participation in the Spanish Electricity Market, FCN Working Paper No. 12/2011, Institute for Future Energy Consumer Needs and Behavior, RWTH Aachen University, May.
- Stocker A., Großmann A., Madlener R., Wolter M.I., (2011). Sustainable Energy Development in Austria Until 2020: Insights from Applying the Integrated Model "e3.at", FCN Working Paper No. 13/2011, Institute for Future Energy Consumer Needs and Behavior, RWTH Aachen University, July.
- Kumbaroğlu G., Madlener R. (2011). Evaluation of Economically Optimal Retrofit Investment Options for Energy Savings in Buildings. FCN Working Paper No. 14/2011, Institute for Future Energy Consumer Needs and Behavior, RWTH Aachen University, September.
- Bernstein R., Madlener R. (2011). Residential Natural Gas Demand Elasticities in OECD Countries: An ARDL Bounds Testing Approach, FCN Working Paper No. 15/2011, Institute for Future Energy Consumer Needs and Behavior, RWTH Aachen University, October.
- Glensk B., Madlener R. (2011). Dynamic Portfolio Selection Methods for Power Generation Assets, FCN Working Paper No. 16/2011, Institute for Future Energy Consumer Needs and Behavior, RWTH Aachen University, November.
- Michelsen C.C., Madlener R. (2011). Homeowners' Motivation to Adopt a Residential Heating System: A Principal Component Analysis, FCN Working Paper No. 17/2011, Institute for Future Energy Consumer Needs and Behavior, RWTH Aachen University, November (revised January 2013).
- Razlaf J., Madlener R. (2011). Performance Measurement of CCS Power Plants Using the Capital Asset Pricing Model, FCN Working Paper No. 18/2011, Institute for Future Energy Consumer Needs and Behavior, RWTH Aachen University, November.
- Himpler S., Madlener R. (2011). Repowering of Wind Turbines: Economics and Optimal Timing, FCN Working Paper No. 19/2011, Institute for Future Energy Consumer Needs and Behavior, RWTH Aachen University, November (revised July 2012).
- Hackbarth A., Madlener R. (2011). Consumer Preferences for Alternative Fuel Vehicles: A Discrete Choice Analysis, FCN Working Paper No. 20/2011, Institute for Future Energy Consumer Needs and Behavior, RWTH Aachen University, December (revised December 2012).
- Heuser B., Madlener R. (2011). Geothermal Heat and Power Generation with Binary Plants: A Two-Factor Real Options Analysis, FCN Working Paper No. 21/2011, Institute for Future Energy Consumer Needs and Behavior, RWTH Aachen University, December.
- Rohlf W., Madlener R. (2011). Multi-Commodity Real Options Analysis of Power Plant Investments: Discounting Endogenous Risk Structures, FCN Working Paper No. 22/2011, Institute for Future Energy Consumer Needs and Behavior, RWTH Aachen University, December (revised July 2012).

2010

- Lang J., Madlener R. (2010). Relevance of Risk Capital and Margining for the Valuation of Power Plants: Cash Requirements for Credit Risk Mitigation, FCN Working Paper No. 1/2010, Institute for Future Energy Consumer Needs and Behavior, RWTH Aachen University, February.
- Michelsen C.C., Madlener R. (2010). Integrated Theoretical Framework for a Homeowner's Decision in Favor of an Innovative Residential Heating System, FCN Working Paper No. 2/2010, Institute for Future Energy Consumer Needs and Behavior, RWTH Aachen University, February.
- Harmsen - van Hout M.J.W., Herings P.J.-J., Dellaert B.G.C. (2010). The Structure of Online Consumer Communication Networks, FCN Working Paper No. 3/2010, Institute for Future Energy Consumer Needs and Behavior, RWTH Aachen University, March.
- Madlener R., Neustadt I. (2010). Renewable Energy Policy in the Presence of Innovation: Does Government Pre-Commitment Matter?, FCN Working Paper No. 4/2010, Institute for Future Energy Consumer Needs and Behavior, RWTH Aachen University, April (revised June 2010 and December 2011).

- Harmsen - van Hout M.J.W., Dellaert B.G.C., Herings, P.J.-J. (2010). Behavioral Effects in Individual Decisions of Network Formation: Complexity Reduces Payoff Orientation and Social Preferences, FCN Working Paper No. 5/2010, Institute for Future Energy Consumer Needs and Behavior, RWTH Aachen University, May.
- Lohwasser R., Madlener R. (2010). Relating R&D and Investment Policies to CCS Market Diffusion Through Two-Factor Learning, FCN Working Paper No. 6/2010, Institute for Future Energy Consumer Needs and Behavior, RWTH Aachen University, June.
- Rohlfes W., Madlener R. (2010). Valuation of CCS-Ready Coal-Fired Power Plants: A Multi-Dimensional Real Options Approach, FCN Working Paper No. 7/2010, Institute for Future Energy Consumer Needs and Behavior, RWTH Aachen University, July.
- Rohlfes W., Madlener R. (2010). Cost Effectiveness of Carbon Capture-Ready Coal Power Plants with Delayed Retrofit, FCN Working Paper No. 8/2010, Institute for Future Energy Consumer Needs and Behavior, RWTH Aachen University, August (revised December 2010).
- Gampert M., Madlener R. (2010). Pan-European Management of Electricity Portfolios: Risks and Opportunities of Contract Bundling, FCN Working Paper No. 9/2010, Institute for Future Energy Consumer Needs and Behavior, RWTH Aachen University, August.
- Glensk B., Madlener R. (2010). Fuzzy Portfolio Optimization for Power Generation Assets, FCN Working Paper No. 10/2010, Institute for Future Energy Consumer Needs and Behavior, RWTH Aachen University, August.
- Lang J., Madlener R. (2010). Portfolio Optimization for Power Plants: The Impact of Credit Risk Mitigation and Margining, FCN Working Paper No. 11/2010, Institute for Future Energy Consumer Needs and Behavior, RWTH Aachen University, September.
- Westner G., Madlener R. (2010). Investment in New Power Generation Under Uncertainty: Benefits of CHP vs. Condensing Plants in a Copula-Based Analysis, FCN Working Paper No. 12/2010, Institute for Future Energy Consumer Needs and Behavior, RWTH Aachen University, September.
- Bellmann E., Lang J., Madlener R. (2010). Cost Evaluation of Credit Risk Securitization in the Electricity Industry: Credit Default Acceptance vs. Margining Costs, FCN Working Paper No. 13/2010, Institute for Future Energy Consumer Needs and Behavior, RWTH Aachen University, September (revised May 2011).
- Ernst C.-S., Lunz B., Hackbarth A., Madlener R., Sauer D.-U., Eckstein L. (2010). Optimal Battery Size for Serial Plug-in Hybrid Vehicles: A Model-Based Economic Analysis for Germany, FCN Working Paper No. 14/2010, Institute for Future Energy Consumer Needs and Behavior, RWTH Aachen University, October (revised June 2011).
- Harmsen - van Hout M.J.W., Herings P.J.-J., Dellaert B.G.C. (2010). Communication Network Formation with Link Specificity and Value Transferability, FCN Working Paper No. 15/2010, Institute for Future Energy Consumer Needs and Behavior, RWTH Aachen University, November.
- Paulun T., Feess E., Madlener R. (2010). Why Higher Price Sensitivity of Consumers May Increase Average Prices: An Analysis of the European Electricity Market, FCN Working Paper No. 16/2010, Institute for Future Energy Consumer Needs and Behavior, RWTH Aachen University, November.
- Madlener R., Glensk B. (2010). Portfolio Impact of New Power Generation Investments of E.ON in Germany, Sweden and the UK, FCN Working Paper No. 17/2010, Institute for Future Energy Consumer Needs and Behavior, RWTH Aachen University, November.
- Ghosh G., Kwasnica A., Shortle J. (2010). A Laboratory Experiment to Compare Two Market Institutions for Emissions Trading, FCN Working Paper No. 18/2010, Institute for Future Energy Consumer Needs and Behavior, RWTH Aachen University, November.
- Bernstein R., Madlener R. (2010). Short- and Long-Run Electricity Demand Elasticities at the Subsectoral Level: A Cointegration Analysis for German Manufacturing Industries, FCN Working Paper No. 19/2010, Institute for Future Energy Consumer Needs and Behavior, RWTH Aachen University, November.
- Mazur C., Madlener R. (2010). Impact of Plug-in Hybrid Electric Vehicles and Charging Regimes on Power Generation Costs and Emissions in Germany, FCN Working Paper No. 20/2010, Institute for Future Energy Consumer Needs and Behavior, RWTH Aachen University, November.
- Madlener R., Stoverink S. (2010). Power Plant Investments in the Turkish Electricity Sector: A Real Options Approach Taking into Account Market Liberalization, FCN Working Paper No. 21/2010, Institute for Future Energy Consumer Needs and Behavior, RWTH Aachen University, December (revised July 2011).

- Melchior T., Madlener R. (2010). Economic Evaluation of IGCC Plants with Hot Gas Cleaning, FCN Working Paper No. 22/2010, Institute for Future Energy Consumer Needs and Behavior, RWTH Aachen University, December.
- Lüschen A., Madlener R. (2010). Economics of Biomass Co-Firing in New Hard Coal Power Plants in Germany, FCN Working Paper No. 23/2010, Institute for Future Energy Consumer Needs and Behavior, RWTH Aachen University, December (revised July 2012).
- Madlener R., Tomm V. (2010). Electricity Consumption of an Ageing Society: Empirical Evidence from a Swiss Household Survey, FCN Working Paper No. 24/2010, Institute for Future Energy Consumer Needs and Behavior, RWTH Aachen University, December.
- Tomm V., Madlener R. (2010). Appliance Endowment and User Behaviour by Age Group: Insights from a Swiss Micro-Survey on Residential Electricity Demand, FCN Working Paper No. 25/2010, Institute for Future Energy Consumer Needs and Behavior, RWTH Aachen University, December.
- Hinrichs H., Madlener R., Pearson P. (2010). Liberalisation of Germany's Electricity System and the Ways Forward of the Unbundling Process: A Historical Perspective and an Outlook, FCN Working Paper No. 26/2010, Institute for Future Energy Consumer Needs and Behavior, RWTH Aachen University, December.
- Achtnicht M. (2010). Do Environmental Benefits Matter? A Choice Experiment Among House Owners in Germany, FCN Working Paper No. 27/2010, Institute for Future Energy Consumer Needs and Behavior, RWTH Aachen University, December.

2009

- Madlener R., Mathar T. (2009). Development Trends and Economics of Concentrating Solar Power Generation Technologies: A Comparative Analysis, FCN Working Paper No. 1/2009, Institute for Future Energy Consumer Needs and Behavior, RWTH Aachen University, November (revised September 2010).
- Madlener R., Latz J. (2009). Centralized and Integrated Decentralized Compressed Air Energy Storage for Enhanced Grid Integration of Wind Power, FCN Working Paper No. 2/2009, Institute for Future Energy Consumer Needs and Behavior, RWTH Aachen University, November (revised September 2010).
- Kraemer C., Madlener R. (2009). Using Fuzzy Real Options Valuation for Assessing Investments in NGCC and CCS Energy Conversion Technology, FCN Working Paper No. 3/2009, Institute for Future Energy Consumer Needs and Behavior, RWTH Aachen University, November.
- Westner G., Madlener R. (2009). Development of Cogeneration in Germany: A Dynamic Portfolio Analysis Based on the New Regulatory Framework, FCN Working Paper No. 4/2009, Institute for Future Energy Consumer Needs and Behavior, RWTH Aachen University, November (revised March 2010).
- Westner G., Madlener R. (2009). The Benefit of Regional Diversification of Cogeneration Investments in Europe: A Mean-Variance Portfolio Analysis, FCN Working Paper No. 5/2009, Institute for Future Energy Consumer Needs and Behavior, RWTH Aachen University, November (revised March 2010).
- Lohwasser R., Madlener R. (2009). Simulation of the European Electricity Market and CCS Development with the HECTOR Model, FCN Working Paper No. 6/2009, Institute for Future Energy Consumer Needs and Behavior, RWTH Aachen University, November.
- Lohwasser R., Madlener R. (2009). Impact of CCS on the Economics of Coal-Fired Power Plants – Why Investment Costs Do and Efficiency Doesn't Matter, FCN Working Paper No. 7/2009, Institute for Future Energy Consumer Needs and Behavior, RWTH Aachen University, November.
- Holtermann T., Madlener R. (2009). Assessment of the Technological Development and Economic Potential of Photobioreactors, FCN Working Paper No. 8/2009, Institute for Future Energy Consumer Needs and Behavior, RWTH Aachen University, November.
- Ghosh G., Carriazo F. (2009). A Comparison of Three Methods of Estimation in the Context of Spatial Modeling, FCN Working Paper No. 9/2009, Institute for Future Energy Consumer Needs and Behavior, RWTH Aachen University, November.
- Ghosh G., Shortle J. (2009). Water Quality Trading when Nonpoint Pollution Loads are Stochastic, FCN Working Paper No. 10/2009, Institute for Future Energy Consumer Needs and Behavior, RWTH Aachen University, November.

Ghosh G., Ribaud M., Shortle J. (2009). Do Baseline Requirements hinder Trades in Water Quality Trading Programs?, FCN Working Paper No. 11/2009, Institute for Future Energy Consumer Needs and Behavior, RWTH Aachen University, November.

Madlener R., Glensk B., Raymond P. (2009). Investigation of E.ON's Power Generation Assets by Using Mean-Variance Portfolio Analysis, FCN Working Paper No. 12/2009, Institute for Future Energy Consumer Needs and Behavior, RWTH Aachen University, November.

2008

Madlener R., Neustadt I., Zweifel P. (2008). Promoting Renewable Electricity Generation in Imperfect Markets: Price vs. Quantity Policies, FCN Working Paper No. 1/2008, Institute for Future Energy Consumer Needs and Behavior, RWTH Aachen University, July (revised November 2011).

Madlener R., Wenk C. (2008). Efficient Investment Portfolios for the Swiss Electricity Supply Sector, FCN Working Paper No. 2/2008, Institute for Future Energy Consumer Needs and Behavior, RWTH Aachen University, August.

Omann I., Kowalski K., Bohunovsky L., Madlener R., Stagl S. (2008). The Influence of Social Preferences on Multi-Criteria Evaluation of Energy Scenarios, FCN Working Paper No. 3/2008, Institute for Future Energy Consumer Needs and Behavior, RWTH Aachen University, August.

Bernstein R., Madlener R. (2008). The Impact of Disaggregated ICT Capital on Electricity Intensity of Production: Econometric Analysis of Major European Industries, FCN Working Paper No. 4/2008, Institute for Future Energy Consumer Needs and Behavior, RWTH Aachen University, September.

Erber G., Madlener R. (2008). Impact of ICT and Human Skills on the European Financial Intermediation Sector, FCN Working Paper No. 5/2008, Institute for Future Energy Consumer Needs and Behavior, RWTH Aachen University, September.